



Bachelor of Business Administration (Honours) Scheme

Definitive Programme Document 2016/17

(also serving as the Broad Discipline of Business
Programme Guide)

Bachelor of Business Administration (Honours) Scheme

Definitive Programme Document

(For the cohort of students admitted to the 4-year undergraduate programme in the 2016/17 academic year)

**This document is subject to review and changes which the programme offering department can decide to make from time to time. Students will be informed of the changes as and when appropriate.*

CONTENTS

1.	General Information	1
2.	Aims and Learning Outcomes of the Programme	5
3.	Admission and Registration	7
3.1	General Minimum Entrance Requirements	7
3.2	Subject Exemption	8
3.3	Credit Transfer	8
3.4	Subject Registration and Withdrawal	9
3.5	Study Load	10
3.6	Deferment of Study	11
4.	Curriculum Structure	12
4.1	General University Requirements	13
4.2	Discipline Specific Requirements	19
4.3	Indicative Progression Patterns	20
	Table 1 - BBA (Hons) in Accountancy	21
	Table 2 - BBA (Hons) in Accounting & Finance	24
	Table 3 - BBA (Hons) in Financial Services	28
	Table 4 - BBA (Hons) in Global Supply Chain Management	31
	Table 5 - BBA (Hons) in International Shipping & Transport Logistics	35
	Table 6 - BBA (Hons) in Management	39
	Table 7 - BBA (Hons) in Marketing	43
4.4	Broad Discipline of Business	46
4.5	Minor	48
5.	Work-integrated Education (WIE)	49
5.1	Learning Objectives of WIE	49
5.2	Requirements of WIE	50
5.3	Compensation and Regulatory Matters	50
5.4	WIE Placement Procedures	51
5.5	WIE Assessments	51
5.6	Information on WIE	51
6.	Language Exit Tests	52
7.	Examination and Assessment	53
7.1	Introduction	53
7.2	Principles of Assessment	53
7.3	Assessment Methods	54
7.4	Progression/Academic Probation/Deregistration	54
7.5	Retaking of Subjects	57
7.6	Exceptional Circumstances	57
7.7	Grading	58
7.8	Different Types of GPA's	60
7.9	Eligibility for Award	62
7.10	Guidelines for Award Classification	63
7.11	Students taking the Major/Minor studies	64
7.12	Classification of Awards	64
7.13	Examination Result Announcements, Transcripts, Testimonials and References	66
7.14	Student Appeal against Examination Results	67
8.	Medium of Instruction	67
9.	Academic Advising	68
10.	Code of Conduct for Students in the Faculty of Business	70

Appendix

1.	Curriculum Map of BBA (Hons) Scheme	73
2.	Honour Declaration Forms	80

** The updated subject description forms (SDF) are posted online for students' access

BACHELOR OF BUSINESS ADMINISTRATION (HONOURS) SCHEME

1. GENERAL INFORMATION

Programme Title:

Bachelor of Business Administration (Honours) in Scheme with the following degree programmes:

<u>Programmes</u>	<u>Programme Stream Codes</u>		<u>Hosting Department</u>
	(4-year Curriculum)	(Senior Year Curriculum)	
BBA (Honours) in Accountancy 會計學(榮譽)工商管理學士學位課程	02402-BAC	02402-SYA	AF
BBA (Honours) in Accounting and Finance 會計及金融(榮譽)工商管理學士學位課程	02402-BAF	02402-SYB	AF
BBA (Honours) in Financial Services 金融服務(榮譽)工商管理學士學位課程	02402-BFS	02402-SYF	AF
BBA (Honours) in Global Supply Chain Management 全球供應鏈管理(榮譽)工商管理學士學位課程	02402-GSC	02402-SYG	LMS
BBA (Honours) in International Shipping and Transport Logistics 國際航運及物流管理(榮譽)工商管理學士學位課程	02402-IST	02402-SYI	LMS
BBA (Honours) in Management 管理學(榮譽)工商管理學士學位課程	02402-MGT	02402-SYM	MM
BBA (Honours) in Marketing 市場學(榮譽)工商管理學士學位課程	02402-MKT	02402-SYK	MM
Broad Discipline of Business 工商管理廣泛學科課程	02405	--	FB

Mode of Attendance: Full-time

Duration:

	<u>4-year curriculum</u>	<u>Senior Year curriculum</u>
Normal	4 years	2 years
Maximum	8 years	4 years

Credit Requirements for Graduation:

A minimum of 120 academic credits, plus 3 training credits for Work-Integrated Education (WIE).

For students admitted to Senior Year places, depending on an individual's academic merits, the credit requirement for graduation is between 60 and 75, plus 3 training credits for WIE.

Implementation Date:

The first cohort was admitted in September 2012

Host Faculty and Departments

Faculty of Business (FB)
School of Accounting and Finance (AF)
Department of Logistics and Maritime Studies (LMS)
Department of Management and Marketing (MM)

Final Award:

BBA (Hons) in Accountancy
會計學(榮譽)工商管理學士學位

BBA (Hons) in Accounting and Finance
會計及金融(榮譽)工商管理學士學位

BBA (Hons) in Financial Services
金融服務(榮譽)工商管理學士學位

BBA (Hons) in Global Supply Chain Management
全球供應鏈管理(榮譽)工商管理學士學位

BBA (Hons) in International Shipping and Transport Logistics
國際航運及物流管理(榮譽)工商管理學士學位

BBA (Hons) in Management
管理學(榮譽)工商管理學士學位

BBA (Hons) in Marketing
市場學(榮譽)工商管理學士學位

**Programme Management:
Chairman of BBA Scheme**

Associate Dean (Academic Support) Dr Man-kwong Leung man-kwong.leung@polyu.edu.hk

Programme Leaders

Broad Discipline of Business	Dr Elvy Pang	elvy.pang@polyu.edu.hk
Accountancy	Mr Philip W.K. Chan	philip.wk.chan@polyu.edu.hk
Accounting and Finance	Dr Vincent Ching	vincent.ching@polyu.edu.hk
Financial Services	Dr Vincent Mok	vincent.mok@polyu.edu.hk
Global Supply Chain Management	Dr Anthony Pang	anthony.pang@polyu.edu.hk
International Shipping and Transport Logistics	Dr T.L. Yip	t.l.yip@polyu.edu.hk
Management	Dr Simon Chan	simon.ch.chan@polyu.edu.hk
Marketing	Dr Jackie Tam	jackie.tam@polyu.edu.hk

Professional Recognition

Programmes	Professional Recognitions
BBA (Hons) in Accountancy	<p>Subject to accreditation assessment, graduates are eligible to enter the professional level of the Qualification Programme of the Hong Kong Institute of Certified Public Accountants (HKICPA) and CPA Programme of CPA Australia. They also receive partial exemption from the professional examinations of:</p> <ul style="list-style-type: none"> • the Association of Chartered Certified Accountants (ACCA) on Papers F1 to F9 • the Chartered Institute of Management Accountants (CIMA) • the Hong Kong Institute of Chartered Secretaries (HKICS)/ Institute of Chartered Secretaries and Administrators (ICSA) • the Hong Kong Securities and Investment Institute (HKSI)
BBA (Hons) in Accounting and Finance	<p>Subject to accreditation assessment, graduates are eligible to enter the professional level of the Qualification Programme of the Hong Kong Institute of Certified Public Accountants (HKICPA) and the CPA Programme of CPA Australia. They also receive partial exemption from the professional examinations of:</p> <ul style="list-style-type: none"> • the Association of Chartered Certified Accountants (ACCA) on Papers F1 to F9 at maximum • the Chartered Institute of Management Accountants (CIMA) • the Hong Kong Institute of Chartered Secretaries (HKICS)/ Institute of Chartered Secretaries and Administrators (ICSA)
BBA (Hons) in Financial Services	<p>Subject to accreditation assessment, graduates who have passed certain subjects may gain partial exemption from the Certified Financial Planner (CFP) programme of the Institute of Financial Planners of Hong Kong (IFPHK) and the professional examinations of the Association of Chartered Certified Accountants (ACCA).</p>
BBA (Hons) in Global Supply Chain Management	<p>Graduates are granted full exemption from the Professional Qualifying Examination (PQE) (Logistics Stream) of The Chartered Institute of Logistics and Transport (CILT).</p> <p>Graduates with passes in required subjects may satisfy the partial educational requirements for membership of The International Institution of Management (IIM). They are also granted partial exemption from the qualifying examinations of The Chartered Institute of Marketing (CIM) and The Chartered Institute of Purchasing and Supply (CIPS)^.</p>
BBA (Hons) in International Shipping and Transport Logistics	<p>Graduates are granted full exemption from the Professional Qualifying Examination (PQE) (Logistics Stream) of The Chartered Institute of Logistics and Transport (CILT).</p> <p>Graduates are also granted partial exemption from the qualifying examinations of the following professional bodies:</p> <ul style="list-style-type: none"> • The Institute of Chartered Shipbrokers (ICS) • Marine Department, The Government of the HKSAR – remission of sea services for the purpose of attempting the Class 3 Certificate of Competency (Deck officer) examination. <i>(Subject to revision)</i>

BBA (Hons) in Management [^]	Hong Kong Institute of Human Resource Management (HKIHRM) has recognized our BBA (Hons) in Management programme and our graduates are eligible to apply for HKIHRM's Associate Membership provided that they have passed, in addition to the core subjects, at least any THREE of the specialist subjects under the HRM Concentration, including <i>Employee Relations, Employment Law, Human Resource Management in China, International HRM, Reward & Performance Management, Staffing and Selection, and Training and Development</i> . Graduates can also obtain exemption of relevant subjects from the professional examinations of both the Association of Chartered Certified Accountants (ACCA) and the Chartered Institute of Management Accountants (CIMA).
BBA (Hons) in Marketing [^]	The programme has been approved and accredited by the Chartered Institute of Marketing (CIM) for direct entry to the CIM's Professional Diploma in Marketing programme and meets the eligibility criteria for admission to the Chartered Postgraduate Diploma in Marketing programme. (Senior marketing management experience is required) Graduates can also obtain exemption of relevant subjects from the professional examinations of both the Association of Chartered Certified Accountants (ACCA) and the Chartered Institute of Management Accountants (CIMA).

[^] Recognition is subject to assessment

2. AIMS AND LEARNING OUTCOMES OF THE PROGRAMME

The Learning Outcomes for the PolyU BBA are driven very directly by the mission of the University and the Faculty of Business. The Learning Outcomes set out below therefore represent a balance between the continuing need for ‘practicality’ in programmes and the pressing need for ‘whole person development’ in our students.

2.1 Aim and Learning Outcomes for the BBA

2.1.1 Aim of the BBA (Hons) Scheme

The over-arching *aim* of the BBA is:

To equip the young people who enter the PolyU's BBA programme with the professional knowledge and personal skills they need to make an effective contribution to the economy and society of Hong Kong and of China, Asia and beyond.

2.1.2 Learning Outcomes for the BBA (Hons) Scheme

The intellectual abilities, knowledge, skills and attributes to be developed in all BBA students are defined in the **programme outcomes** set out below. There are two types of outcomes – ‘generic’ and ‘business and management-specific’.

2.1.3 On graduating from the BBA programme all students will be able to:

Generic Outcomes

1. Communicate effectively in English, Putonghua and written Chinese, at a level appropriate for business purposes and general conversation;
2. Demonstrate a global outlook and understand cultural diversity, globalization and their implications for business;
3. Apply creative thinking in the business setting;
4. Identify and respond appropriately to ethical issues as they arise generally and in the business setting;
5. Adopt an entrepreneurial perspective, identifying and evaluating business opportunities as they arise.

Business and Management –specific Outcomes

6. Understand the applications of information systems in business and evaluate their effectiveness and managerial implications;
7. Apply basic financial theories, analyze financial reports and understand the operation of financial markets;
8. Identify and analyze the means by which value is created in goods and services and delivered to users;
9. Evaluate the processes and structures through which organizations plan, decide, motivate and control their activities;

10. Identify and analyze those aspects of the domestic and global business environment that set the 'parameters of choice' within which business organizations set objectives and take actions;

2.1.4 In addition to the outcomes specified for the BBA scheme as a whole, students graduating from specific Major awards should:

1. Have sufficient professionally-specific skills and knowledge to make an immediate contribution to the organization in which they are first employed.
2. Have a foundation of professionally-specific skills and knowledge, on which to base the process of continuous professional development.

(The profession referred to here is that relating to the particular award.)

2.1.5 PolyU's educational mission is to nurture competent professionals who are also critical thinkers, effective communicators, innovative problem solvers, lifelong learners, and ethical leaders. The institutional learning outcomes for acquiring these graduate attributes at UG level are appropriately addressed by the totality of the BBA programme learning outcomes. In addition, some generic learning outcomes such as global outlook, sense of social and national responsibility, cultural appreciation and entrepreneurship are also addressed through co-curricular activities offered by faculties, departments and various teaching and learning support units of the University. Students are encouraged to take full use of such opportunities to achieve these learning outcomes.

2.1.6 The curriculum map for BBA (Hons) Scheme is in Appendix, which presents an analysis of the curriculum in terms of the coverage of the programme outcomes. The analysis identifies how each of the programme outcomes is introduced, reinforced and assessed. Entrance requirements and other learning activities, such as WIE, independent language learning, and exchange programmes, are also included, to provide a complete overview of how the programme outcomes are to be met.

3. ADMISSION AND REGISTRATION

3.1 General Minimum Entrance Requirements

The minimum entrance requirements are the University's General Minimum Entrance Requirements for Bachelor's degree programmes, as specified below:

3.1.1 For those applying on the basis of HKDSE results:

- ❑ Level 3 in English Language and Chinese Language¹; AND
- ❑ Level 2 in Mathematics, Liberal Studies and one other Elective subject

Preferred subjects: English Language and Mathematics

3.1.2 For those applying on the basis of other local qualifications:

- ❑ An appropriate Diploma passed with credit or a Higher Certificate from a recognised institution; OR
- ❑ An appropriate Associate Degree / Higher Diploma from a recognised institution (suitable candidates will be considered for advanced standing entry to the senior year curriculum).

3.1.3 Other local/ non-local qualifications deemed to be acceptable for admission purpose

The University accepts attainments in HKALE / HKASLE, GCEALE / GCEASLE² and International Baccalaureate (IB)³ Diploma for admission to its 4-year degree programmes. Applicants holding A-Level and IB qualifications will be granted credit transfer upon admission

Entry for applicants with *alternative qualifications* will be dealt with in accordance with the University's *Academic Regulations and Procedures*.

3.1.4 Language requirements:

- (i) Applicants seeking admission to full-time Bachelor's degree programmes on the strength of non-HKDSE qualifications are required to hold one of the following qualifications for English language:-
 - a. A Test of English as a Foreign Language (TOEFL) score of 550 or above for the paper-based tests OR a score of 80 or above for the internet-based tests; OR
 - b. An overall Band Score of 6 in the International English Language Testing System (IELTS).
 - c. For applicants applying on the strength of GCE results, Grade C or above in GCSE / IGCSE / GCEOL English or equivalent.

¹ Alternative Chinese qualifications will continue to be accepted for students who meet the conditions specified by EDB: (a) students who have learned Chinese Language for less than 6 years while receiving primary and secondary education; (b) students who have learned Chinese Language for 6 years or more in schools, but have been taught an adapted and simpler Chinese Language curriculum not normally applicable to the majority of students in local schools. Students achieving the required grade in the relevant subject [i.e. Grade E or above in GCE(A-level)/GCE(AS-level) OR Grade C or above in IGCSE/GCSE/GCE(O-level)] will be regarded as obtaining a Level 3 in HKDSE Chinese for meeting our entrance requirements and for calculation of the related admission scores. If these applicants also sit for the examination of HKDSE Chinese, the "best" result of either the Alternative Chinese qualifications or HKDSE Chinese would be taken into account in the admission and selection process.

² For applicants seeking admission on the strength of A-Level qualifications (i.e. either HKALE or GCEALE) with effect from the 2015/16 entry, Grade E in 3 A-Level subjects or 2 A-Level and 2 AS-Level subjects will be required.

³ For applicants seeking admission on the strength of International Baccalaureate (IB) qualifications, a minimum score of 24 with at least Level 4 in 2 Higher Level subjects are required.

- d. For applicants possessing IB qualifications, Level 4 in English.
- (ii) Individual cases will be considered on their own merit. Applicants concerned may be required to attend interviews or tests to further ascertain their language proficiency.

3.2 Subject Exemption

Students may be exempted from taking any specified subjects, including mandatory General University Requirements (GUR) subjects, if they have successfully completed similar subjects previously in another programme or have demonstrated the level of proficiency/ability to the satisfaction of the subject offering Department. Subject exemption is normally decided by the subject offering Department. However, for applications which are submitted by students who have completed an approved student exchange programme, the subject exemption is to be decided by the programme offering Department in consultation with the subject offering Departments. In case of disagreement between the programme offering Department and the subject offering Department, the two Faculty Deans/School Board Chairmen concerned will make a final decision jointly on the application. If students are exempted from taking a specified subject, the credits associated with the exempted subject will not be counted towards meeting the award requirements (except for exemptions granted at admission stage). It will therefore be necessary for the students to consult the programme offering Department and take another subject in order to satisfy the credit requirement for the award.

3.3 Credit Transfer

- 3.3.1** Students may be given credits for recognised previous studies (including mandatory General University Requirements (GUR) subjects) and the credits will be counted towards meeting the requirements for award. Transferred credits may be counted towards more than one award. The granting of credit transfer is a matter of academic judgment. In assessing the transferability of subjects previously taken, the syllabus of that subject should be carefully scrutinized to ascertain that it is comparable to the PolyU's curriculum. Whether the previous studies are from institutions on credit-based or non-credit-based system should not be a matter of concern, and the subject size need not be a perfect match. To ascertain the academic standing of the institution offering the previous studies, the Department might need to request the institutions concerned to provide more relevant information.
- 3.3.2** Credit transfer may be done with or without the grade being carried over; the former should normally be used when the credits were gained from PolyU. Credit transfer with the grade being carried over may be granted for subjects taken from outside the University, if deemed appropriate, and with due consideration to the academic equivalence of the subjects concerned and the comparability of the grading systems adopted by the University and the other approved institutions. Subject credit transfer is normally decided by the subject offering Department. However, for applications which are submitted by students who have completed an approved student exchange programme, the decision will be made by the programme offering Department in consultation with the subject offering Departments.
- 3.3.3** Normally, not more than 50% of the credit requirement for award may be transferable from approved institutions outside the University. For transfer of credits from programmes offered by PolyU, normally not more than 67% of the credit requirement for award can be transferred. In cases where both types of credits are being transferred (i.e. from programmes offered by PolyU and from approved institutions outside the University), not more than 50% of the credit requirement for award may

be transferred. The 50% and 67% ceiling is also applicable to Minor programme, i.e. credit transfer can be given for not more than 9 credits of a Minor programme if the previous credits were earned from approved institutions outside of the university; and not more than 12 credits of a Minor programme if the previous credits were earned from programmes offered by PolyU. For students admitted to an Articulation Degree or Senior Year curriculum which is already a reduced curriculum, they should not be given credit transfer for any required GUR subjects, and they must complete at least 60 credits to be eligible for award. Students admitted to an Articulation Degree or Senior Year curriculum based on qualification more advanced than Associate Degree/Higher Diploma may be given credit transfer for the required GUR subjects if they had completed comparable components in their earlier studies. These students can take fewer than 60 credits for attaining the award.

- 3.3.4** If a student is waived from a particular stage of study on the basis of advanced qualifications held at the time of admission, the student concerned will be required to complete fewer credits for award. For these students, the 'deducted' credits at the admission stage will be counted towards the maximum limit for credit transfer when students apply for further credit transfer after their admission. This also applies to students admitted to an Articulation Degree or Senior Year curriculum when they claim further credit transfer after admission.
- 3.3.5** Credit transfer can be applicable to credits earned by students through study at an overseas institution under an approved exchange programme. Students should, before they go abroad for the exchange programme, seek prior approval from the programme offering Department (who will consult the subject offering Departments as appropriate) on their study plan and credit transferability. As with all other credit transfer applications, the Departments concerned should scrutinise the syllabuses of the subjects which the students are going to take at the overseas institution, and determine their credit transferability based on academic equivalence with the corresponding subjects on offer at the PolyU, and the comparability of the grading systems adopted by PolyU and the overseas institution. The transferability of credits, and the suitability for allowing grades to be carried over, must be determined and communicated to students before they go abroad for the exchange programme. In order to overcome the problems associated with subject-to-subject mappings, block credit transfer rather than subject-by-subject credit transfer can be given.
- 3.3.6** All credit transfers approved will take effect only in the semester for which they are approved. A student who applies for transfer of credits during the re-enrolment or the add/drop period of a particular semester will only be eligible for graduation at the end of that semester, even if the granting of credit transfer will immediately enable the student to satisfy the credit requirement for the award.
- 3.3.7** Regarding credit transfer for GUR subjects, the Programme Host Department is the approval authority at the time of admission to determine the number of GUR credits which an Advanced Standing student will be required to complete for the award concerned.

3.4 Subject Registration and Withdrawal

- 3.4.1** In addition to programme registration, students need to register for the subjects at specified periods prior to the commencement of the semester. An add/drop period will also be scheduled for each semester / term. Students may apply for withdrawal of their registration on a subject after the add / drop period, if they have a genuine need to do so. The application should be made to the relevant programme offering Department and will require the approval of both the subject lecturer and the host Department Programme Leader concerned (or an alternate academic staff authorised by the programme offering Department). Applications submitted after the

commencement of the examination period will not be considered. For approved applications of subject withdrawal, the tuition fee paid for the subject will be forfeited and the withdrawal status of the subject will be shown in the examination result notification and transcript of studies, but will not be counted in the calculation of the GPA.

- 3.4.2** The pre-requisite requirements of a subject must have been fulfilled before a student registers for that subject. However, the subject offering Department has the discretion to waive the pre-requisite requirements of a subject, if deemed appropriate. If the pre-requisite subject concerned forms part of the requirements for award, the subject has to be passed in order to satisfy the graduation requirements for the programme concerned, despite the waiving of the pre-requisite.
- 3.4.3** Subject to the maximum study load of 21 credits per semester and the availability of study places, students are allowed to take additional subjects on top of the prescribed credit requirement for award before they become eligible for graduation. Students will be allowed to take additional subjects for broadening purpose, after they fulfill the graduation requirements and for the following semester. However, they will still be subject to the maximum study load of 21 credits per semester and the availability of places in the subjects concerned, and their enrolment will be as subject-based students only.

3.5 Study Load

- 3.5.1** For students following the progression pattern specified for their programme, they have to take the number of credits and subjects, as specified in the Definitive Programme Document, for each semester. Students cannot drop those subjects assigned by the department unless prior approval has been given by the department.
- 3.5.2** The normal study load is 15 credits in a semester. The maximum study load to be taken by a student in a semester is 21 credits, unless exceptional approval is given by the Head of the programme offering Department. For such cases, students should be reminded that the study load approved should not be taken as grounds for academic appeal.
- 3.5.3** To help improve the academic performance of students on academic probation, these students will be required to take a reduced study load. The maximum number of credits to be taken by the students will be subject to the approval of the Department.
- 3.5.4** Students are not allowed to take zero subject in any semester, including the mandatory summer term as required by some programmes, unless they have obtained prior approval from the programme offering Department; otherwise they will be classified as having unofficially withdrawn from their programme. Students who have been approved for zero subject enrolment (i.e. taking zero subject in a semester) are allowed to retain their student status and continue using campus facilities and library facilities. Any semester in which the students are allowed to take zero subject will nevertheless be counted towards the maximum period of registration.
- 3.5.5** Students who have obtained approval to pace their studies and students on programmes without any specified progression pattern who wish to take more than the normal load of 15 credits in a semester should seek advice from the Department concerned before the selection of subjects.

3.6 Deferment of Study

- 3.6.1** Students may apply for deferment of study if they have a genuine need to do so such as illness or posting to work outside Hong Kong. Approval from the Department offering the programme is required. The deferment period will not be counted towards the maximum period of registration.
- 3.6.2** Application for deferment of study will be entertained only in exceptional circumstances from students who have not yet completed the first year of a full-time or sandwich programme.
- 3.6.3** Where the period of deferment of study begins during a stage for which fees have been paid, no refund of such fees will be made.
- 3.6.4** Students who have been approved for deferment are not entitled to enjoy any campus facilities during the deferment period.

4. CURRICULUM STRUCTURE

This section sets out the requirements for graduation. It defines the structure of the 4-year full-time programme within the BBA scheme.

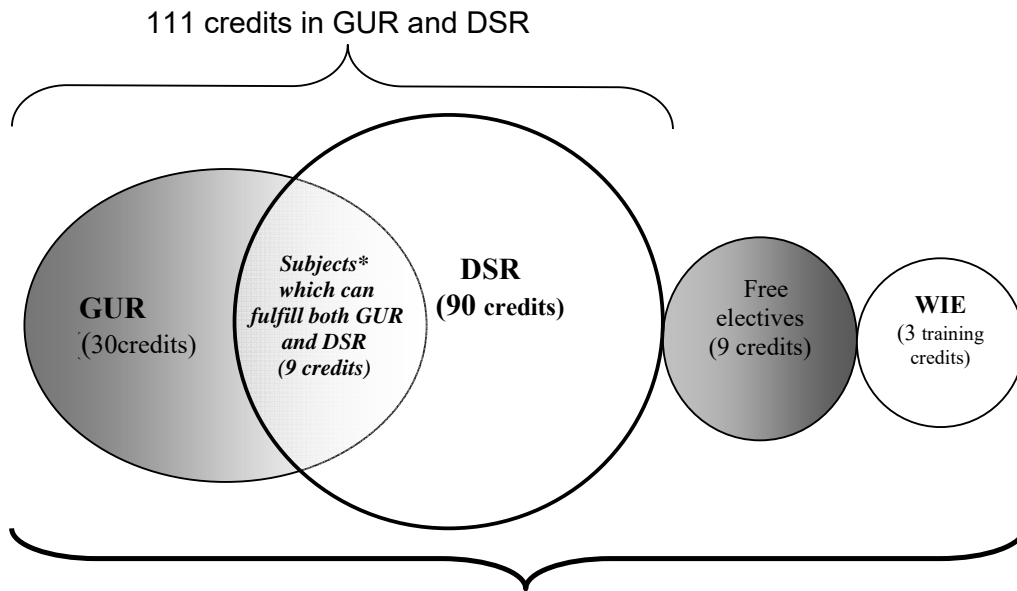
To qualify for graduation, a student must complete **at least 120 academic credits**, including the followings:

- 30 credits of General University Requirements (GUR);
- 90 credits of Discipline Specific Requirement (DSR);
- 9 credits of free elective subjects

Since 9 credits of GUR subjects can be fulfilled by DSR, students may take a minimum total of 111 credits in GUR and DSR

Students are also required to complete 3 training credits in Work-integrated Education (WIE) in order to graduate.

Figure 1: Diagram of the Curriculum



Minimum credit requirement for graduation = 120 academic credits + 3 training credits

***Subjects which can satisfy both GUR and DSR:**

GUR categories (3 credits each)	DSR subjects in BBA curriculum
CAR(A) - Human Nature, Relations and Development	APSS111 Introduction to Psychology APSS112 Introduction to Sociology
CAR(B) - Community, Organisation and Globalisation	AF1605 Introduction to Economics LGT2106 Principles of Operations Management MM2711 Introduction to Marketing
Leadership and Intra-personal Development (LIPD)	MM1051 Tango! Managing Self & Leading Others

According to the decision of Academic Regulations Committee, students taking a DSR subject that qualifies as a GUR subject are regarded as having satisfied both the DSR and the GUR concerned. However, the missing 3 credits have to be made up by taking any other subject (excluding remedial subjects).

Students can base on their own learning needs and interest to take more elective subjects beyond GUR and DSR until the total number of credits reaches 150 without incurring a higher

tuition rate. Students can use these extra electives for fulfilling the requirements of a particular combination of study options (e.g. Minor programme), for taking advanced electives, or for further broadening purposes.

4.1 General University Requirements (GUR) (minimum 30 credits)

Students are required to complete the following general requirements for graduation in addition to programme specific requirements:

Areas	Credits
Language & Communication Requirements (LCR) ^(a)	9
▪ English	(6)
▪ Chinese	(3)
Cluster-Area Requirements (CAR) ^(b)	12
▪ 3 credits from each of the following 4 cluster areas:	
(A) Human Nature, Relations and Development	(3)
(B) Community, Organisation and Globalisation	(3)
(C) History, Cultures and World Views	(3)
(D) Science, Technology and Environment	(3)
and of which	
▪ A minimum of 3 credits on subjects designated as "China-related" ^(c)	
Other Requirements	
▪ Leadership and Intra-personal Development ^(d)	3
▪ Service-Learning ^(e)	3
▪ Freshman Seminar ^(f)	3
▪ Healthy Lifestyle (non-credit bearing) ^(g)	0
Total GUR credits	30

(a) Language and Communication Requirements (LCR)

1. English (At least 6 credits)

All students must successfully complete two 3-credit English language subjects as stipulated by the University (Table 1). These subjects are designed to suit students' different levels of English language proficiency at entry, as determined by their HKDSE score or the English Language Centre (ELC) entry assessment (when no HKDSE score is available).

Students who can demonstrate that they have achieved a level beyond that of the LCR proficient level subjects as listed in Table 2 (based on an assessment by ELC) may apply for subject exemption or credit transfer of the LCR subject or subjects concerned.

Table 1: Framework of English LCR subjects

HKDSE	Subject 1	Subject 2
Level 5 or equivalent	Advanced English for University Studies (ELC1014) 3 credits	Any LCR elective at proficient level (see Table 2) 3 credits
Level 4 or equivalent	English for University Studies (ELC1012) 3 credits	Advanced English for University Studies (ELC1014) 3 credits
Level 3 or equivalent	Practical English for University Studies (ELC1011) 3 credits	English for University Studies (ELC1012) 3 credits

Table 2: LCR Proficient level subjects in English

For students entering with HKDSE Level 5, or at an equivalent level or above	Advanced English Reading and Writing Skills (ELC2011)	3 credits each
	Persuasive Communication (ELC2012)	
	English in Literature and Film (ELC2013)	

2. Chinese (At least 3 credits)

All students must successfully complete one 3-credit Chinese language subject as stipulated by the University (Table 3). These subjects are designed to suit students' different levels of Chinese language proficiency at entry, as determined by their HKDSE score or the Chinese Language Centre (CLC) entry assessment (when no HKDSE score is available). Students can opt to take additional Chinese LCR subjects (Table 5) in their free electives.

Non-Chinese speakers and those students whose Chinese standards are at junior secondary level or below will by default be exempted from the DSR - Chinese and CAR - Chinese Reading and Writing requirements. However, this group of students would still be required to take one Chinese LCR subject to fulfil their Chinese LCR designed to suit their language background and entry standard as shown in Table 4.

Students who can demonstrate that they have achieved a level beyond that of the course "Advanced Communication Skills in Chinese" as listed in Table 3 (based on an assessment by CLC) may apply for subject exemption or credit transfer of the LCR subject concerned.

Table 3: Framework of Chinese LCR subjects

HKDSE	Required Subject
HKDSE Level 4 and 5 or equivalent	Advanced Communication Skills in Chinese (CBS1102P) 3 credits
HKDSE Level 3 or equivalent	Fundamentals of Chinese Communication (CBS1101P) 3 credits
For non-Chinese speakers or students whose Chinese standards are at junior secondary level or below	One subject from Table 4 below

Table 4: Chinese LCR Subjects for non-Chinese Speakers or students whose Chinese standards are at junior secondary level or below

Subject	Pre-requisite / exclusion	
Chinese I (for non-Chinese speaking students) (CBS1151)	<ul style="list-style-type: none"> ▪ For non-Chinese speaking students at beginners' level 	3 credits each
Chinese II (for non-Chinese speaking students) (CBS1152)	<ul style="list-style-type: none"> ▪ For non-Chinese speaking students; and ▪ Students who have completed Chinese I (CBS1151), or equivalent 	
Chinese III (for non-Chinese speaking students) (CBS2151)	<ul style="list-style-type: none"> ▪ For non-Chinese speaking students at higher competence levels; and ▪ Students who have completed Chinese II (CBS1152), or equivalent 	
Chinese IV (for Non-Chinese speaking students) (CBS2154)	<ul style="list-style-type: none"> ▪ For non-Chinese students at intermediate competence levels; and ▪ Students who have completed Chinese III or equivalent 	
Chinese Literature – Linguistics and Cultural Perspectives (for non-Chinese speaking students) (CBS2152)	<ul style="list-style-type: none"> ▪ For non-Chinese speaking students at higher competence levels; and ▪ Students who have completed Chinese III (CBS2151), or equivalent 	

Table 5: Other LCR Electives in Chinese

Subject	Pre-requisite / exclusion	
Putonghua in the Workplace (CBS2101P)	<ul style="list-style-type: none"> ▪ Students have completed "Fundamentals of Chinese Communication" (CBS1101P) or could demonstrate the proof with basic Putonghua proficiency ▪ For students whose native language is not Putonghua 	3 credits each
Chinese and the Multimedia (CBS2102P)	<ul style="list-style-type: none"> ▪ For students entering with HKDSE level 4 or above; or ▪ Students with advanced competence level as determined by the entry assessment; or ▪ Students who have completed "Fundamentals of Chinese Communication" (CBS1101P) 	
Creative writing in Chinese (CBS2103P)	<ul style="list-style-type: none"> ▪ For students entering with HKDSE level 4 or above; or ▪ Students with advanced competence level as determined by the entry assessment; or ▪ Students who have completed "Fundamentals of Chinese Communication" (CBS1101P) 	
Elementary Cantonese (Taught in Putonghua) (CBS1153P)	For students whose native language is Putonghua	
Elementary Cantonese (Taught in English) (CBS1153)	For students whose native language is not Chinese	
Intermediate Cantonese (Taught in English) (CBS2153)	<ul style="list-style-type: none"> ▪ Successful completion of "Elementary Cantonese"; or ▪ Meet a certain standard in a pre-course assessment 	

3. Reading and Writing Requirement

In addition to the LCR in English and Chinese explained above, to enhance students' literacy skills in reading and writing, students must, among the Cluster Areas Requirement (CAR) subjects they take, pass one subject that includes the requirement for a substantive piece of writing in English (EW Requirement) and one subject with the requirement of a substantive piece of writing in Chinese (CW Requirement). Subjects approved for meeting the Writing Requirement will be given a "W" designation.

Students must also, among the CAR subjects they take, pass one subject that includes the requirement for the reading of an extensive text in English (ER Requirement) and one subject with the requirement for the reading of an extensive text in Chinese (CR Requirement). Subjects approved for meeting the Reading Requirement will be given an "R" designation.

Students who are non-Chinese speakers or those whose Chinese standards are at junior secondary level or below will be, by default, exempted from the Reading and Writing Requirements in Chinese.

(b) **Cluster Areas Requirement (CAR)(12 credits)***

To expand students' intellectual capacity beyond their disciplinary domain and to enable them to tackle professional and global issues from a multidisciplinary perspective, students are required to successfully complete at least one 3-credit subject in each of the following four Cluster Areas:

- Human Nature, Relations and Development
- Community, Organisation and Globalisation
- History, Culture and World Views
- Science, Technology and Environment

**Two Cluster Areas (6 credits) are already fulfilled by DSR subjects in BBA curriculum:*

Cluster Area	DSR subjects in BBA curriculum
Human Nature, Relations and Development	APSS111 Introduction to Psychology APSS112 Introduction to Sociology
Community, Organisation and Globalisation	AF1605 Introduction to Economics LGT2106 Principles of Operations Management MM2711 Introduction to Marketing

(c) **China Studies Requirement(3 credits)**

To enable students to develop a deeper understanding of China (i.e., its history, culture and society, as well as emerging issues or challenges), students are further required to complete at least 3 credits of CAR subjects which are designated as "China-related" from any of the four Cluster Areas.

(d) Leadership and Intra-Personal Development (3 credits)**

All students must successfully complete one 3-credit subject in the area of leadership and intra-personal development (LIPD), which is designed to introduce to students the concepts and theories of leadership and prepare them to become “preferred leaders” for the profession.

***BBA DSR subject, MM1051 Tango! Managing Self & Leading Others, already fulfills requirement of ‘Leadership and Intra-personal Development’ under GUR.*

(e) Service-Learning (3 credits)

All students must successfully complete one 3-credit subject designated to meet the service-learning requirement, in which they are required to:

- (1) participate in substantial community service or civic engagement activities that will benefit the service users or the community at large in a meaningful way,
- (2) apply the knowledge and skills acquired from their Major or other learning experiences at the University to the community service activities, and
- (3) reflect on their service learning experience in order to link theory with practice for the development of a stronger sense of ethical, social and national responsibility.

(f) Freshman Seminar (3 credits; FB1003)

All students must successfully complete in the first semester of their first year of study, one 3-credit Freshman Seminar offered by their chosen Broad Discipline. The purpose is to:

- (1) introduce students to their chosen discipline and enthuse them about their major study,
- (2) cultivate students’ creativity, problem-solving ability and global outlook,
- (3) give students an exposure to the concepts of, and an understanding of, entrepreneurship, and
- (4) engage students, in their first year of study, in desirable forms of university learning that emphasises self-regulation, autonomous learning and deep understanding.

(g) Healthy Lifestyle (0 credit)

Healthy Lifestyle is the platform for all-round development. All students are required to successfully complete a non-credit-bearing programme in healthy lifestyle offered by the Student Affairs Office. The programme will cover:

- (1) fitness evaluation,
- (2) concepts on health and fitness,
- (3) sports skills acquisition, and
- (4) exercise practicum

4.2 Discipline Specific Requirements (DSR) (90 credits)

4.2.1 Compulsory core subjects to all BBA awards (57 credits)

<u>Subject Code</u>	<u>Subject Title</u>	<u>Credit</u>
AF1605	Introduction to Economics*	3
AF2108	Financial Accounting	3
AF2110	Management Accounting 1	3
AF2504	Introduction to Business Law	3
AF2602	Global Economic Environment	3
AF3313	Business Finance	3
AF/MM4513	Corporate Social Responsibility	3
AMA1501	Introduction to Statistics for Business	3
APSS111	Introduction to Psychology*	3
APSS112	Introduction to Sociology*	3
CBS3221P	Chinese Language Communication for Business	3
ELC3221	Workplace English for Business Students I	3
ELC3222	Workplace English for Business Students II	3
LGT2106	Principles of Operations Management*	3
MM1051	Tango! Managing Self & Leading Others*	3
MM2021	Management & Organisation	3
MM2422	Managing Business Information Systems and Applications	3
MM2711	Introduction to Marketing*	3
MM4311	Strategic Management	3

**These subjects can satisfy both DSR and GUR*

4.2.2 Specialist Subjects in each BBA programme (33 credits)

BBA students will need to take 33 credits of subjects in their respective business discipline, including a Capstone Project (6 credits). The detailed list of specialist subjects for each BBA award is presented in Section 4.3.

4.2.3 Nine credits of free electives (9 credits)

In addition to the minimum total 111 credits for GUR and DSR, students are required to take 9 credits of free electives, which can be used for fulfilling the requirements of a particular combination of study options (e.g. Minor programme), for taking advanced electives, or for further broadening purposes, subject to meeting the pre-requisite requirements.

Alternatively, rather than taking 9 credits of free electives for meeting the minimum 120 credits requirement for graduation, students may make use of the 9 credits of free electives for pursuing a Minor. The credit requirement for a Minor is 18, at least 9 of which should be at Level 3 or above. Subject to approval by the Minor-offering department, students may count up to 6 credits from their Major/GUR (including LCR subjects at proficient level) towards their chosen Minor. Some possible study options are suggested below:

a) Minor programmes offered by Departments in Faculty of Business

BBA students may take 18 credits for a Minor programme, which may be a business specialization other than the Major, if there are 6 overlapping credits between BBA student's Major and the business Minor concerned, students may spend the 9 credits of free electives and an additional 3 credits for the Minor, and graduate with a minimum of 123 credits.

- b) Minor programmes offered by Departments outside Faculty of Business BBA students may also take 18 credits for a Minor in a non-business field, students may graduate with a Major and a non-Business Minor with 129 credits. Subject to approval by the Minor-offering department, students may count up to 6 credits from GUR towards their chosen Minor, in which case, students will need 12 more credits and can graduate with a Major and Minor at a minimum of 123 credits.

4.2.4 Work-Integrated Education (please refer to Section 5 for details)

<u>Subject Code</u>	<u>Subject Title</u>	<u>Training Credit</u>
FB3001	Work-Integrated Education	3

Student must acquire at least 3 'WIE credits' (classified as training credits) in addition to the minimum 120 academic credits to be eligible for graduation.

4.3 Indicative Progression Pattern

Indicative progression patterns for each Major under BBA Scheme are shown in Tables 1 to 7. As they are all credit-based programmes, these are indicative and students may choose to proceed at a slower or faster pace. However, it is anticipated that the great majority of students will follow these or similar patterns. Subjects which are in particularly high demand may be offered more than once per year, which would give students additional flexibility in determining their own pattern of progression. The maximum study load that a student can take in a semester is 21 credits.

- Table 1 - Indicative Progression Pattern for BBA (Hons) in Accountancy
- Table 2 - Indicative Progression Pattern for BBA (Hons) in Accounting & Finance
- Table 3 - Indicative Progression Pattern for BBA (Hons) in Financial Services
- Table 4 - Indicative Progression Pattern for BBA (Hons) in Global Supply Chain Management
- Table 5 - Indicative Progression Pattern for BBA (Hons) in International Shipping & Transport Logistics
- Table 6 - Indicative Progression Pattern for BBA (Hons) in Management
- Table 7 - Indicative Progression Pattern for BBA (Hons) in Marketing

Table 1a – Indicative Progression Pattern for BBA (Hons) in Accountancy (02402-BAC)

Suggested Semester	Code	Subject	Credit
Year 1 (Semester 1)			
1	AF1605	Introduction to Economics ⁽¹⁾	3
1	APSS111	Introduction to Psychology ⁽²⁾	3
1		LCR-English 1	3
1		LCR-Chinese 1	3
1	FB1003	Freshman Seminar	3
			15
Year 1 (Semester 2)			
2	AMA1501	Introduction to Statistics for Business	3
2	AF2108	Financial Accounting	3
2	APSS112	Introduction to Sociology ⁽²⁾	3
2		LCR-English 2	3
2		CAR C	3
2		Healthy Lifestyle	0
			15
Year 2 (Semester 1)			
1	AF2110	Management Accounting 1	3
1	AF2504	Introduction to Business Law	3
1	AF2602	Global Economic Environment	3
1	AF3110	Intermediate Accounting 1	3
1	MM2021	Management and Organisation	3
1	MM1051	Tango! Managing Self & Leading Others ⁽³⁾	3
			18
Year 2 (Semester 2)			
2	AF3111	Intermediate Accounting 2	3
2	AF3112	Management Accounting 2	3
2	ELC3221	Workplace English for Business Students I	3
2	MM2422	Managing Business Information Systems & Applications	3
2	MM2711	Introduction to Marketing ⁽¹⁾	3
			15
Year 3 (Semester 1)			
1	AF3210	Hong Kong Tax Framework	3
1	AF3313	Business Finance	3
1	AF4228	Auditing and Assurance	3
1	ELC3222	Workplace English for Business Students II	3
1 or 2		Service-Learning	3
			15
Year 3 (Semester 2)			
2	AF3211	Accounting Information Systems	3
2	AF3507	Company Law	3
2	CBS3221P	Chinese Language Communication for Business	3
2	LGT2106	Principles of Operations Management ⁽¹⁾	3
2		Free Elective 1	3
			15

Year 4 (Semester 1)			
1	AF4106	Advanced Financial Accounting	3
1	AF4320	Corporate Finance	3
1	AF4513	Corporate Social Responsibility	3
1	AF4912	Capstone Project	3
1		CAR D	3
			15
Year 4 (Semester 2)			
2	AF4912	Capstone Project (cont.)	3
2	MM4311	Strategic Management	3
2		Free Elective 2	3
2		Free Elective 3	3
			12
Total minimum academic credits: 120			
plus			
Training credits in WIE (FB3001): 3			

Specialist Subjects (33 credits)

Compulsory subjects (10 subjects/ 33 credits)

<u>Subject Code</u>	<u>Subject Title</u>
AF3110	Intermediate Accounting 1
AF3111	Intermediate Accounting 2
AF3112	Management Accounting 2
AF3210	Hong Kong Tax Framework
AF3211	Accounting Information Systems
AF3507	Company Law
AF4106	Advanced Financial Accounting
AF4228	Auditing and Assurance
AF4320	Corporate Finance
AF4912	Capstone Project (6-credit)

Suggested elective subjects relevant to the programme

<u>Subject Code</u>	<u>Subject Title</u>
AF4229	Tax Planning and China Tax
AF4230	Forensic Accounting and Advanced Auditing
AF4512	Corporate Governance and Compliance
AF4224	Information Systems Audit and Control

Notes:

- (1) Cluster Area in Community, Organization and Globalization [CAR (A)] under GUR can be fulfilled by AF1605 Introduction to Economics, LGT2106 Principles of Operations Management and MM2711 Introduction to Marketing;
- (2) Cluster Area in Human Nature, Relations and Development [CAR (B)] under GUR can be fulfilled by APSS111 Introduction to Psychology and APSS112 Introduction to Sociology;
- (3) 'Leadership and Intra-personal Development (LIPD)' under GUR can be fulfilled by MM1051 Tango! Managing Self & Leading Others.

**Table 1b - Indicative Progression Pattern for Senior Year Students –
BBA (Hons) in Accountancy (02402-SYA)
[with graduation requirement of 75 credits]**

Suggested Semester	Code	Subject	Credit
Year 1 (Semester 1)			
1	AF2108	Financial Accounting	3
1	AF2110	Management Accounting 1	3
1		CAR C	3
1	AF2504	Introduction to Business Law	3
1	ELC3221	Workplace English for Business Students I	3
1	AF2602	Global Economic Environment	3
			18
Year 1 (Semester 2)			
2	ELC3222	Workplace English for Business Students II	3
2	AF3313	Business Finance	3
2	AF3110	Intermediate Accounting 1	3
2	AF3112	Management Accounting 2	3
2	LGT2106	Principle of Operations Management	3
2	CBS3221P	Chinese Language Communication for Business	3
			18
Year 1 (Summer Term)			
3	FB3001	Work-Integrated Education (WIE)	3*
3	AF3507	Company Law	3
3	AF4513	Corporate Social Responsibility	3
			6
Year 2 (Semester 1)			
1	AF3210	Hong Kong Tax Framework	3
1		CAR D	3
1	AF4228	Auditing and Assurance	3
1	AF3111	Intermediate Accounting 2	3
1	AF4912	Capstone Project	3
1		Service-Learning	3
			18
Year 2 (Semester 2)			
2	AF3211	Accounting Information Systems	3
2	AF4320	Corporate Finance	3
2	AF4106	Advanced Financial Accounting	3
2	AF4912	Capstone Project (cont.)	3
2	MM4311	Strategic Management	3
			15
Total minimum academic credits: 75 plus *Training credits in WIE (FB3001): 3			

**Table 2a - Indicative Progression Pattern for
BBA (Hons) in Accounting and Finance (02402-BAF)**

Suggested Semester	Code	Subject	Credit
Year 1 (Semester 1)			
1	AF1605	Introduction to Economics ⁽¹⁾	3
1	APSS111	Introduction to Psychology ⁽²⁾	3
1		LCR-English 1	3
1		LCR-Chinese 1	3
1	FB1003	Freshman Seminar	3
			15
Year 1 (Semester 2)			
2	AMA1501	Introduction to Statistics for Business	3
2	AF2108	Financial Accounting	3
2	APSS112	Introduction to Sociology ⁽²⁾	3
2		LCR-English 2	3
2		CAR 1	3
2		Healthy Lifestyle	0
			15
Year 2 (Semester 1)			
1	AF2110	Management Accounting 1	3
1	AF2504	Introduction to Business Law	3
1	AF2602	Global Economic Environment	3
1	AF3110	Intermediate Accounting 1	3
1	MM1051	Tango! Managing Self & Leading Others ⁽³⁾	3
1	MM2021	Management and Organisation	3
			18
Year 2 (Semester 2)			
2	AF3111	Intermediate Accounting 2	3
2	AF3112	Management Accounting 2	3
2	ELC3221	Workplace English for Business Students I	3
2	MM2422	Managing Business Information Systems & Applications	3
2	MM2711	Introduction to Marketing ⁽¹⁾	3
			15
Year 3 (Semester 1)			
1	AF3313	Business Finance	3
1	AFxxx	Specialist Elective	3
1	ELC3222	Workplace English for Business Students II	3
1 or 2		Service-Learning	3
1		Free Elective 1	3
			15
Year 3 (Semester 2)			
2	AF3316	Investments	3
2	AF3507	Company Law	3
2	AF4320	Corporate Finance	3
2	CBS3221P	Chinese Language Communication for Business	3
2	LGT2106	Principles of Operations Management ⁽¹⁾	3
			15

Year 4 (Semester 1)			
1	AF4331	Business Valuation	3
1	AF4513	Corporate Social Responsibility	3
1	AF4912	Capstone Project	3
1		CAR 2	3
1		Free Elective 2	3
			15
Year 4 (Semester 2)			
2	AF4317	Derivative Securities	3
2	AF4912	Capstone Project (cont.)	3
2	MM4311	Strategic Management	3
2		Free Elective 3	3
			12
Total minimum academic credits: 120			
plus			
Training credits in WIE (FB3001): 3			

Specialist Subjects (33 credits)

Compulsory Subjects (9 subjects / 30 credits)

<u>Subject Code</u>	<u>Subject Title</u>
AF3110	Intermediate Accounting 1
AF3111	Intermediate Accounting 2
AF3112	Management Accounting 2
AF3316	Investments
AF3507	Company Law
AF4317	Derivative Securities
AF4320	Corporate Finance
AF4331	Business Valuation
AF4912	Capstone Project(6-credit)

List of Specialist Elective Subjects (choose any 1 subject / 3 credits)

<u>Subject Code</u>	<u>Subject Title</u>
AMA1500	Foundation Mathematics for Accounting and Finance
AF3210	Hong Kong Tax Framework*
AF3211	Accounting Information Systems*
AF3317	Risk Management
AF4106	Advanced Financial Accounting*
AF4228	Auditing and Assurance*
AF4322	Management of Financial Institutions
AF4323	International Finance
AF4326	Fixed Income Securities
AF4328	Mergers and Acquisitions

*These are required subjects for HKICPA QP programme. Students are recommended to take these 4 elective subjects in order to fulfill the entrance requirement for the QP programme.

Notes:

- (1) *Cluster Area in Community, Organization and Globalization [CAR (A)] under GUR can be fulfilled by AF1605 Introduction to Economics, LGT2106 Principles of Operations Management and MM2711 Introduction to Marketing;*
- (2) *Cluster Area in Human Nature, Relations and Development [CAR (B)] under GUR can be fulfilled by APSS111 Introduction to Psychology and APSS112 Introduction to Sociology;*
- (3) *'Leadership and Intra-personal Development (LIPD)' under GUR can be fulfilled by MM1051 Tango! Managing Self & Leading Others.*

**Table 2b - Indicative Progression Pattern for Senior Year Students –
BBA (Hons) in Accounting and Finance (02402-SYB)
[with graduation requirement of 75 credits]**

Suggested Semester	Code	Subject	Credit
Year 1 (Semester 1)			
1		CAR C	3
1	AF2110	Management Accounting 1	3
1	AF2504	Introduction to Business Law	3
1	ELC3221	Workplace English for Business Students I	3
1	AF2602	Global Economic Environment	3
1	AF2108	Financial Accounting	3
			18
Year 1 (Semester 2)			
2		CAR D	3
2	AF3313	Business Finance	3
2	AF3110	Intermediate Accounting 1	3
2	AF3112	Management Accounting 2	3
2	LGT2106	Principles of Operations Management	3
2	ELC3222	Workplace English for Business Students II	3
			18
Year 1 (Summer Term)			
3	AF4320	Corporate Finance	3
3	AF4513	Corporate Social Responsibility	3
3	FB3001	Work-Integrated Education (WIE)	3*
			6
Year 2 (Semester 1)			
1	AF4331	Business Valuation	3
1	AF4912	Capstone Project	3
1	AFxxxx	Specialist Elective	3
1	AF3111	Intermediate Accounting 2	3
1	CBS3221P	Chinese Language Communication for Business	3
1		Service-Learning	3
			18
Year 2 (Semester 2)			
2	AF3316	Investments	3
2	AF3507	Company Law	3
2	AF4317	Derivative Securities	3
2	AF4912	Capstone Project (cont.)	3
2	MM4311	Strategic Management	3
			15
Total minimum academic credits: 75 plus *Training credits in WIE (FB3001): 3			

**Table 3a - Indicative Progression Pattern for
BBA (Hons) in Financial Services (02402-BFS)**

Suggested Semester	Code	Subject	Credit
Year 1 (Semester 1)			
1	AF1605	Introduction to Economics ⁽¹⁾	3
1	APSS111	Introduction to Psychology ⁽²⁾	3
1		LCR-English 1	3
1		LCR-Chinese 1	3
1	FB1003	Freshman Seminar	3
			15
Year 1 (Semester 2)			
2	AMA1501	Introduction to Statistics for Business	3
2	AF2108	Financial Accounting	3
2	APSS112	Introduction to Sociology ⁽²⁾	3
2		LCR-English 2	3
2		CAR 1	3
2		Healthy Lifestyle	0
			15
Year 2 (Semester 1)			
1	AF2110	Management Accounting 1	3
1	AF2504	Introduction to Business Law	3
1	AF2602	Global Economic Environment	3
1	MM2021	Management and Organisation	3
1	MM1051	Tango! Managing Self & Leading Others ⁽³⁾	3
			15
Year 2 (Semester 2)			
2	AF3313	Business Finance	3
2		CAR 2	3
2	ELC3221	Workplace English for Business Students I	3
2	MM2422	Managing Business Information Systems & Applications	3
2	MM2711	Introduction to Marketing ⁽¹⁾	3
			15
Year 3 (Semester 1)			
1	AF3318	Principles of Insurance	3
1	AFxxxx	Specialist Elective 1	3
1	ELC3222	Workplace English for Business Students II	3
1 or 2		Service-Learning	3
1		Free Elective 1	3
			15
Year 3 (Semester 2)			
2	AF3316	Investments	3
2	AF3317	Risk Management	3
2	AFxxxx	Specialist Elective 2	3
2	CBS3221P	Chinese Language Communication for Business	3
2	LGT2106	Principles of Operations Management ⁽¹⁾	3
2		Free Elective 2	3
			18

Year 4 (Semester 1)			
1	AF4317	Derivative Securities	3
1	AF4324	Financial Planning	3
1	AF4513	Corporate Social Responsibility	3
1	AF4912	Capstone Project	3
1	AFxxxx	Specialist Elective 3	3
			15
Year 4 (Semester 2)			
2	AF4912	Capstone Project (cont.)	3
2	AF4322	Management of Financial Institutions	3
2	MM4311	Strategic Management	3
2		Free Elective 3	3
			12
Total minimum academic credits: 120			
plus			
Training credits in WIE (FB3001): 3			

Specialist Subjects (33 credits)

Compulsory Subjects (7 subjects / 24 credits)

<u>Subject Code</u>	<u>Subject Title</u>
AF3317	Risk Management
AF3318	Principles of Insurance
AF3316	Investments
AF4317	Derivative Securities
AF4322	Management of Financial Institutions
AF4324	Financial Planning
AF4912	Capstone Project (6-credit)

List of Specialist Elective Subjects (choose any 3 subjects / 9 credits)

<u>Subject Code</u>	<u>Subject Title</u>
AMA1500	Foundation Mathematics for Accounting and Finance
AF3322	Credit Analysis & Management
AF4318	Financial Systems in China
AF4320	Corporate Finance
AF4323	International Finance
AF4325	Wealth Management
AF4331	Business Valuation

Notes:

- (1) Cluster Area in Community, Organization and Globalization [CAR (A)] under GUR can be fulfilled by AF1605 Introduction to Economics, LGT2106 Principles of Operations Management and MM2711 Introduction to Marketing;
- (2) Cluster Area in Human Nature, Relations and Development [CAR (B)] under GUR can be fulfilled by APSS111 Introduction to Psychology and APSS112 Introduction to Sociology;
- (3) 'Leadership and Intra-personal Development (LIPD)' under GUR can be fulfilled by MM1051 Tango! Managing Self & Leading Others.

**Table 3b - Indicative Progression Pattern for Senior Year Students –
BBA (Hons) in Financial Services (02402-SYF)
[with graduation requirement of 75 credits]**

Suggested Semester	Code	Subject	Credit
Year 1 (Semester 1)			
1	AF2108	Financial Accounting	3
1	AF2110	Management Accounting 1	3
1	AF3318	Principles of Insurance	3
1	AF2504	Introduction to Business Law	3
1	ELC3221	Workplace English for Business Students I	3
1	AF2602	Global Economic Environment	3
			18
Year 1 (Semester 2)			
2		CAR C	3
2	CBS3221P	Chinese Language Communication for Business	3
2	AF3313	Business Finance	3
2	LGT2106	Principles of Operations Management	3
2		CAR D	3
2	ELC3222	Workplace English for Business Students II	3
			18
Year 1 (Summer Term)			
3	AF4513	Corporate Social Responsibility	3
3	FB3001	Work-Integrated Education (WIE)	3*
			3
Year 2 (Semester 1)			
1	AF4317	Derivative Securities	3
1	AF4324	Financial Planning	3
1	AF4912	Capstone Project	3
1	AFxxxx	Special Elective 1	3
1	AFxxxx	Special Elective 2	3
1		Service-Learning	3
			18
Year 2 (Semester 2)			
2	AF3316	Investments	3
2	AF3317	Risk Management	3
2	AF4322	Management of Financial Institutions	3
2	AF4912	Capstone Project (cont.)	3
2	AFxxxx	Special Elective 3	3
2	MM4311	Strategic Management	3
			18
Total minimum academic credits: 75 plus *Training credits in WIE (FB3001): 3			

Table 4a - Indicative Progression Pattern for BBA (Hons) in Global Supply Chain Management (02402-GSC)

Suggested Semester	Code	Subject	Credit
Year 1 (Semester 1)			
1	AMA1501	Introduction to Statistics for Business	3
1	APSS112	Introduction to Sociology ⁽¹⁾	3
1	AF1605	Introduction to Economics ⁽²⁾	3
1		LCR-English 1	3
1	FB1003	Freshman Seminar	3
			15
Year 1 (Semester 2)			
2	APSS111	Introduction to Psychology ⁽¹⁾	3
2	MM1051	Tango! Managing Self & Leading Others ⁽³⁾	3
2	MM2021	Management and Organisation	3
2		LCR-Chinese 1	3
2		LCR-English 2	3
2		Healthy Lifestyle	0
			15
Year 2 (Semester 1)			
1	AF2108	Financial Accounting	3
1	AF2602	Global Economic Environment	3
1	LGT2106	Principles of Operations Management ⁽²⁾	3
1	LGT3001	Logistics and Distribution Management	3
1	MM2422	Managing Business Information Systems & Applications	3
1	MM2711	Introduction to Marketing ⁽²⁾	3
			18
Year 2 (Semester 2)			
2	AF2110	Management Accounting 1	3
2	AF2504	Introduction to Business Law	3
2	ELC3221	Workplace English for Business Students I	3
2	LGT4110	Purchasing Management	3
2		CAR 1	3
			15
Year 3 (Semester 1)			
1	CBS3221P	Chinese Language Communication for Business	3
1	LGT3107	Warehousing and Materials Management	3
1	LGT4105	International Operations Management	3
1	LGTxxxx	Specialist Elective 1	3
1		Service-Learning	3
1		Free Elective 1	3
			18

Year 3 (Semester 2)			
2	AF3313	Business Finance	3
2	ELC3222	Workplace English for Business Students II	3
2	LGT3102	Management Science	3
2	LGTxxx	Special Elective 2	3
2		Free Elective 2	3
			15
Year 4 (Semester 1)			
1	LGT4106	Supply Chain Management	3
1 & 2	LGT4209	GSCM Capstone Project	3
1	MM4311	Strategic Management	3
1	LGTxxx	Specialist Elective 3	3
1		CAR 2	3
			15
Year 4 (Semester 2)			
1 & 2	LGT4209	GSCM Capstone Project	3
2	MM4513	Corporate Social Responsibility	3
2		Free Elective 3	3
			9
Total minimum academic credits: 120			
plus			
Training credits in WIE (FB3001): 3			

Specialist Subjects (33 credits)

Compulsory Subjects (7 subjects / 24 credits)

<u>Subject Code</u>	<u>Subject Title</u>
LGT3001	Logistics and Distribution Management
LGT3102	Management Science
LGT3107	Warehousing and Materials Management
LGT4105	International Operations Management
LGT4106	Supply Chain Management
LGT4110	Purchasing Management
LGT4209	GSCM Capstone Project (6 credits)

List of Specialist Elective Subjects (choose any 3 subjects / 9 credits)

<u>Subject Code</u>	<u>Subject Title</u>
LGT2009	Introduction to Shipping & Transport Logistics Operations
LGT3003	Intermodalism
LGT3012	Research Methods
LGT3016	Shipping Logistics
LGT3020	International Trade and Shipping
LGT3023	Carriage of Goods Law
LGT3101	Intermediate Business Statistics
LGT3106	Quality Management
LGT3108	Introduction to Enterprise Resource Planning System
LGT3207	Study Tour and Visits in Global Supply Chain Management
LGT4017	Information Systems for Logistics Management
LGT4021	Shipping Finance
LGT4101	Practice of Management Decision Analysis
LGT4102	Simulation for Operations & Information Management
LGT4103	Project Management
LGT4104	Operations Strategy
LGT4111	Special Topics in Operations Management
LGT4113	Service Operations Management
LGT4114	Supplier Development and Contract Management

Notes:

- (1) *Cluster Area in Human Nature, Relations and Development under GUR can be fulfilled by APSS111 Introduction to Psychology and APSS112 Introduction to Sociology;*
- (2) *Cluster Area in Community, Organization and Globalization under GUR can be fulfilled by AF1605 Introduction to Economics, LGT2106 Principles of Operations Management and MM2711 Introduction to Marketing;*
- (3) *Leadership and Intra-personal Development' under GUR can be fulfilled by MM1051 Tango! Managing Self & Leading Others.*

**Table 4b - Indicative Progression Pattern for Senior Year Students –
BBA (Hons) in Global Supply Chain Management (02402-SYG)
(2-year pattern for students admitted on senior year basis – AD/HD holders)**

Suggested Semester	Code	Subject	Credit
Year 1 (Semester 1)			
1	AF2108	Financial Accounting	3
1	AF2602	Global Economic Environment	3
1	LGT2106	Principles of Operations Management	3
1	LGT3001	Logistics and Distribution Management	3
1	LGT3107	Warehousing and Materials Management	3
1	LGT4106	Supply Chain Management	3
			18
Year 1 (Semester 2)			
2	AF2110	Management Accounting 1	3
2	AF2504	Introduction to Business Law	3
2	LGT3102	Management Science	3
2	LGT4110	Purchasing Management	3
2	ELC3221	Workplace English for Business Students I	3
2		CAR 1	3
			18
Year 2 (Semester 1)			
1	CBS3221P	Chinese Language Communication for Business	3
1	LGT4105	International Operations Management	3
1	LGT4209	GSCM Capstone Project	3
1	MM4311	Strategic Management	3
1		Service-Learning	3
			15
Year 2 (Semester 2)			
2	AF3313	Business Finance	3
2	ELC3222	Workplace English for Business Students II	3
2	LGT4209	GSCM Capstone Project	3
2	MM4513	Corporate Social Responsibility	3
2		CAR 2	3
			15
	LGTxxxx	Any 2 specialist electives at any semester	6
Total academic credits: 72 plus Training credits in WIE (FB3001): 3			

Notes:

- (1) The indicative progression pattern is for illustration purpose.
- (2) Depending on an individual's academic merits, the credit requirement for graduation is between 60 and 75.

Table 5a - Indicative Progression Pattern for BBA (Hons) in International Shipping and Transport Logistics (02402-IST)

Suggested Semester	Code	Subject	Credit
Year 1 (Semester 1)			
1	AF1605	Introduction to Economics ⁽¹⁾	3
1	AMA1501	Introduction to Statistics for Business	3
1	APSS112	Introduction to Sociology ⁽²⁾	3
1		LCR-English 1	3
1	FB1003	Freshman Seminar	3
			15
Year 1 (Semester 2)			
2	APSS111	Introduction to Psychology ⁽²⁾	3
2	MM1051	Tango! Managing Self & Leading Others ⁽³⁾	3
2	MM2021	Management and Organisation	3
2		LCR-Chinese 1	3
2		LCR-English 2	3
2		Healthy Lifestyle	0
			15
Year 2 (Semester 1)			
1	AF2108	Financial Accounting	3
1	AF2602	Global Economic Environment	3
1	LGT2009	Introduction to Shipping and Transport Logistics Operations	3
1	MM2422	Managing Business Information Systems & Applications	3
1	MM2711	Introduction to Marketing ⁽¹⁾	3
1		CAR 1	3
			18
Year 2 (Semester 2)			
2	AF2110	Management Accounting 1	3
2	AF2504	Introduction to Business Law	3
2	ELC3221	Workplace English for Business Students I	3
2	LGT2106	Principles of Operations Management ⁽¹⁾	3
2	LGT3016	Shipping Logistics	3
			15
Year 3 (Semester 1)			
1	CBS3221P	Chinese Language Communication for Business	3
1	LGT3019	Economics of International Transport Logistics	3
1	LGT3023	Carriage of Goods Law	3
1		CAR 2	3
1		Service-Learning	3
1		Free Elective	3
			18

Year 3 (Semester 2)			
2	AF3313	Business Finance	3
2	ELC3222	Workplace English for Business Students II	3
2	LGT4021	Shipping Finance	3
2	LGTxxx	Specialist Elective 1	3
2		Free Elective 2	3
			15
Year 4 (Semester 1)			
1	LGT4005	Shipbroking and Chartering Management	3
1 & 2	LGT4208	ISTL Capstone Project	3
1	LGTxxx	Specialist Elective 2	3
1	MM4311	Strategic Management	3
			12
Year 4 (Semester 2)			
1 & 2	LGT4208	ISTL Capstone Project	3
2	MM4513	Corporate Social Responsibility	3
2	LGTxxx	Specialist Elective 3	3
2		Free Elective 3	3
			12
Total minimum academic credits: 120			
plus			
Training credits in WIE (FB3001): 3			

Specialist Subjects (33 credits)

Compulsory Subjects (7 subjects / 24 credits)

<u>Subject Code</u>	<u>Subject Title</u>
LGT2009	Introduction to Shipping and Transport Logistics Operations
LGT3016	Shipping Logistics
LGT3019	Economics of International Transport Logistics
LGT3023	Carriage of Goods Law
LGT4005	Shipbroking and Chartering Management
LGT4021	Shipping Finance
LGT4208	ISTL Capstone Project (6 credits)

Specialist Elective Subjects (choose any 3 subjects / 9 credits)

<u>Subject Code</u>	<u>Subject Title</u>
LGT3001	Logistics and Distribution Management
LGT3003	Intermodalism
LGT3004	Navigation and Communication Systems
LGT3007	Air Transport Logistics
LGT3012	Research Methods
LGT3020	International Trade and Shipping
LGT3022	Marine Navigation and Meteorology
LGT3024	Cargo Operation and Management
LGT3025	Maritime Risk Management
LGT3026	Contemporary Maritime Development and Issues
LGT3106	Quality Management
LGT3108	Introduction to Enterprise Resource Planning System
LGT3206	International Study Tour in Shipping & Logistics
LGT4004	Management of Maritime Organisations
LGT4006	Advanced Navigation and Ship Handling
LGT4010	Stability, Stress and Loadlines
LGT4011	Port Planning and Management
LGT4012	Airport Management
LGT4013	Liner Shipping Management
LGT4015	Legal Aspects of e-Business in Logistics
LGT4016	Maritime Law
LGT4017	Information Systems for Logistics Management
LGT4020	Insurance in Shipping and Transport Logistics
LGT4106	Supply Chain Management

Notes:

- (1) *Cluster Area in Community, Organization and Globalization under GUR can be fulfilled by AF1605 Introduction to Economics, LGT2106 Principles of Operations Management and MM2711 Introduction to Marketing;*
- (2) *Cluster Area in Human Nature, Relations and Development under GUR can be fulfilled by APSS111 Introduction to Psychology and APSS112 Introduction to Sociology;*
- (3) *Leadership and Intra-personal Development' under GUR can be fulfilled by MM1051 Tango! Managing Self & Leading Others.*

**Table 5b - Indicative Progression Pattern for Senior Year Students –
BBA (Hons) in International Shipping and Transport Logistics (02402-SYI)
(2-year pattern for students admitted on senior year basis – AD/HD holders)**

Suggested Semester	Code	Subject	Credit
Year 1 (Semester 1)			
1	AF2108	Financial Accounting	3
1	AF2602	Global Economic Environment	3
1	LGT2009	Introduction to Shipping and Transport Logistics Operations	3
1	LGT3019	Economics of International Transport Logistics	3
1	LGT3023	Carriage of Goods Law	3
1		CAR 1	3
			18
Year 1 (Semester 2)			
2	AF2110	Management Accounting 1	3
2	AF2504	Introduction to Business Law	3
2	ELC3221	Workplace English for Business Students I	3
2	LGT2106	Principles of Operations Management	3
2	LGT3016	Shipping Logistics	3
2		CAR 2	3
			18
Year 2 (Semester 1)			
1	CBS3221P	Chinese Language Communication for Business	3
1	LGT4005	Shipbroking and Chartering Management	3
1	LGT4208	ISTL Capstone Project	3
1	MM4311	Strategic Management	3
1		Service-Learning	3
			15
Year 2 (Semester 2)			
2	AF3313	Business Finance	3
2	ELC3222	Workplace English for Business Students II	3
2	LGT4021	Shipping Finance	3
2	LGT4208	ISTL Capstone Project	3
2	MM4513	Corporate Social Responsibility	3
			15
	LGTxxxx	Any 3 specialist electives at any semester	9
Total academic credits: 75 plus Training credits in WIE (FB3001): 3			

Notes:

- (1) The indicative progression pattern is for illustration purpose.
- (2) Depending on an individual's academic merits, the credit requirement for graduation is between 60 and 75.

Table 6a - Indicative Progression Pattern for BBA (Hons) in Management (02402-MGT)

Suggested Semester	Code	Subject	Credit
Year 1 (Semester 1)			
1	AMA1501	Introduction to Statistics for Business	3
1	APSS111	Introduction to Psychology ⁽¹⁾	3
1		LCR-English 1	3
1		LCR-Chinese	3
1		Healthy Lifestyle	0
1	FB1003	Freshman Seminar	3
			15
Year 1 (Semester 2)			
2	AF1605	Introduction to Economics ⁽²⁾	3
2	APSS112	Introduction to Sociology ⁽¹⁾	3
2	MM1051	Tango! Managing Self & Leading Others ⁽³⁾	3
2	MM2021	Management and Organisation	3
2	MM2711	Introduction to Marketing ⁽²⁾	3
			15
Year 2 (Semester 1)			
1	AF2108	Financial Accounting	3
1	AF2602	Global Economic Environment	3
1		LCR-English 2	3
1	MM2422	Managing Business Information Systems & Applications	3
1	MM3111	Human Resource Management	3
			15
Year 2 (Semester 2)			
2	AF2110	Management Accounting 1	3
2	AF2504	Introduction to Business Law	3
2	MM3141	Organisational Behaviour	3
2	MM3151	Managerial Leadership	3
2		CAR 1	3
			15
Year 3 (Semester 1)			
1	CBS3221P	Chinese Language Communication for Business	3
1	ELC3221	Workplace English for Business Students I	3
1	LGT2106	Principles of Operations Management ⁽²⁾	3
1	MM4342	Global Business Management	3
1		CAR 2	3
1		Free Elective 1	3
			18
Year 3 (Semester 2)			
2	AF3313	Business Finance	3
2	ELC3222	Workplace English for Business Students II	3
2	MM3011	Research Methods for Management	3
2	MMxxxx	Specialist Elective 1	3
2		Service-Learning	3
2		Free Elective 2	3
			18

Year 4 (Semester 1)			
1	MM4311	Strategic Management	3
1	MM4513	Corporate Social Responsibility	3
1 & 2	MM4922	Management Capstone Project	3
1	MMxxxx	Specialist Elective 2	3
			12
Year 4 (Semester 2)			
2	MM4351	Entrepreneurship	3
1 & 2	MM4922	Management Capstone Project	3
2	MMxxxx	Specialist Elective 3	3
2		Free Elective 3	3
			12
Total minimum academic credits: 120			
plus			
Training credits in WIE (FB3001): 3			

Specialist Subjects (33 credits)

Compulsory Subjects (7 subjects / 24 credits)

<u>Subject Code</u>	<u>Subject Title</u>
MM3011	Research Methods for Management
MM3111	Human Resource Management
MM3141	Organisational Behaviour
MM3151	Managerial Leadership
MM4342	Global Business Management
MM4351	Entrepreneurship
MM4922	Management Capstone Project (6 credits)

Specialist Elective Subjects (choose any 3 subjects / 9 credits)

<u>Subject Code</u>	<u>Subject Title</u>
AF3508	Employment Law
MM2392	Social Entrepreneurship Practicum
MM3131	Training and Development
MM3411	Management Information Systems
MM3451	Knowledge Management
MM3461	Applied Statistical Analysis for Management
MM4111	Employee Relations
MM4121	Human Resource Management in China
MM4132	Reward & Performance Management
MM4141	Managing Diversity in Organisations
MM4151	Gender and Organisations
MM4161	Staffing and Selection
MM4181	International Human Resource Management
MM4191	Business Negotiation
MM4391	Management Practice Through Real World Projects
MM4411	E-Commerce for Management
MM4501	Environmental Management for Business
MM4522	China Business Management

Notes:

- (1) *Cluster Area in Human Nature, Relations and Development under GUR can be fulfilled by APSS111 Introduction to Psychology and APSS112 Introduction to Sociology;*
- (2) *Cluster Area in Community, Organization and Globalization under GUR can be fulfilled by AF1605 Introduction to Economics, LGT2106 Principles of Operations Management and MM2711 Introduction to Marketing;*
- (3) *'Leadership and Intra-personal Development' under GUR can be fulfilled by MM1051 Tango! Managing Self & Leading Others.*

Table 6b - Indicative Progression Pattern for Senior Year Students – BBA (Hons) in Management (02402-SYM)

Suggested Semester	Code	Subject	Credit
Year 3 (Semester 1)			
1	AF2602	Global Economic Environment	3
1	CBS3221P	Chinese Language Communication for Business	3
1	ELC3221	Workplace English for Business Students I	3
1	LGT2106	Principles of Operations Management	3
1	MM3111	Human Resource Management	3
1		CAR C	3
			18
Year 3 (Semester 2)			
2	AF2110	Management Accounting 1	3
2	AF2504	Introduction to Business Law	3
2	AF3313	Business Finance	3
2	MM3011	Research Methods for Management	3
2	MM3141	Organisational Behaviour	3
2		Service-Learning	3
			18
Year 3 (Semester 3)			
3	FB3001	<i>Work-Integrated Education (WIE)</i>	3*
Year 4 (Semester 1)			
1	MM4311	Strategic Management	3
1	MM4342	Global Business Management	3
1	MM4513	Corporate Social Responsibility	3
1 & 2	MM4922	Management Capstone Project	3
1	MMxxxx	Specialist Elective 1	3
1	MMxxxx	Specialist Elective 2	3
			18
Year 4 (Semester 2)			
2	ELC3222	Workplace English for Business Students II	3
2	MM3151	Managerial Leadership	3
2	MM4351	Entrepreneurship	3
1 & 2	MM4922	Management Capstone Project	3
2	MMxxxx	Specialist Elective 3	3
2		CAR D	3
			18
Total minimum academic credits: 72 plus *Training credits in WIE (FB3001): 3			

Notes: Depending on an individual's academic merits, the credit requirement for graduation is between 60 and 75.

Table 7a - Indicative Progression Pattern for BBA (Hons) in Marketing (02402-MKT)

Suggested Semester	Code	Subject	Credit
Year 1 (Semester 1)			
1	AMA1501	Introduction to Statistics for Business	3
1	APSS111	Introduction to Psychology ⁽¹⁾	3
1		LCR-English 1	3
1		LCR-Chinese	3
1		Healthy Lifestyle	0
1	FB1003	Freshman Seminar	3
			15
Year 1 (Semester 2)			
2	AF1605	Introduction to Economics ⁽²⁾	3
2	APSS112	Introduction to Sociology ⁽¹⁾	3
2	MM1051	Tango! Managing Self & Leading Others ⁽³⁾	3
2	MM2711	Introduction to Marketing ⁽²⁾	3
2		LCR-English 2	3
			15
Year 2 (Semester 1)			
1	AF2108	Financial Accounting	3
1	AF2602	Global Economic Environment	3
1	LGT2106	Principles of Operations Management ⁽²⁾	3
1	MM2422	Managing Business Information Systems & Applications	3
1	MM3721	Consumer Behaviour	3
			15
Year 2 (Semester 2)			
2	AF2110	Management Accounting 1	3
2	AF2504	Introduction to Business Law	3
2	MM2021	Management and Organisation	3
2	MM3761	Marketing Research	3
2		CAR 1	3
			15
Year 3 (Semester 1)			
1	CBS3221P	Chinese Language Communication for Business	3
1	ELC3221	Workplace English for Business Students I	3
1	MM4513	Corporate Social Responsibility	3
1	MM4732	Global Marketing	3
1	MM4772	Product Management	3
1		Free Elective 1	3
			18
Year 3 (Semester 2)			
2	AF3313	Business Finance	3
2	ELC3222	Workplace English for Business Students II	3
2	MM3711	Integrated Marketing Communications	3
2	MM4711	Business to Business Marketing	3
2		Service-Learning	3
2		Free Elective 2	3
			18

Year 4 (Semester 1)			
1	MM4311	Strategic Management	3
1 & 2	MM4942	Marketing Capstone Project	3
1	MMxxxx	Specialist Elective 1	3
1		CAR 2	3
			12
Year 4 (Semester 2)			
2	MM4751	Marketing Strategy	3
1 & 2	MM4942	Marketing Capstone Project	3
2	MMxxxx	Specialist Elective 2	3
2		Free Elective 3	3
			12
Total minimum academic credits: 120			
plus			
Training credits in WIE (FB3001): 3			

Specialist Subjects (33 credits)

Compulsory Subjects (8 subjects / 27 credits)

<u>Subject Code</u>	<u>Subject Title</u>
MM3711	Integrated Marketing Communications
MM3721	Consumer Behaviour
MM3761	Marketing Research
MM4711	Business to Business Marketing
MM4732	Global Marketing
MM4751	Marketing Strategy
MM4772	Product Management
MM4942	Marketing Capstone Project (6 credits)

Specialist Elective Subjects (choose any 2 subjects / 6 credits)

<u>Subject Code</u>	<u>Subject Title</u>
MM2392	Social Entrepreneurship Practicum
MM3771	Further Marketing Research
MM3782	Marketing Channel Management
MM3791	Retailing and Merchandising
MM3841	Internet Marketing
MM4391	Management Practice Through Real World Projects
MM4721	Marketing Management in China
MM4741	Market Decision Analysis
MM4781	Sales Management
MM4791	Services Marketing
MM4831	Strategic Brand Management

Notes:

- (1) Cluster Area in Human Nature, Relations and Development under GUR can be fulfilled by APSS111 Introduction to Psychology and APSS112 Introduction to Sociology;
- (2) Cluster Area in Community, Organization and Globalization under GUR can be fulfilled by AF1605 Introduction to Economics, LGT2106 Principles of Operations Management and MM2711 Introduction to Marketing;
- (3) 'Leadership and Intra-personal Development' under GUR can be fulfilled by MM1051 Tango! Managing Self & Leading Others.

**Table 7b - Indicative Progression for Senior Year Students –
BBA (Hons) in Marketing (02402-SYK)**

Suggested Semester	Code	Subject	Credit
Year 3 (Semester 1)			
1	AF2602	Global Economic Environment	3
1	CBS3221P	Chinese Language Communication for Business	3
1	ELC3221	Workplace English for Business Students I	3
1	LGT2106	Principles of Operations Management	3
1	MM3721	Consumer Behaviour	3
1	MM4772	Product Management	3
			18
Year 3 (Semester 2)			
2	AF2110	Management Accounting 1	3
2	AF3313	Business Finance	3
2	ELC3222	Workplace English for Business Students II	3
2	MM3761	Marketing Research	3
2	MM4711	Business to Business Marketing	3
2		CAR C	3
			18
Year 3 (Semester 3)			
3	FB3001	<i>Work-Integrated Education (WIE)</i>	3*
Year 4 (Semester 1)			
1	MM4311	Strategic Management	3
1	MM4513	Corporate Social Responsibility	3
1	MM4732	Global Marketing	3
1 & 2	MM4942	Marketing Capstone Project	3
1	MMxxxx	Specialist Elective 1	3
1		CAR D	3
			18
Year 4 (Semester 2)			
2	AF2504	Introduction to Business Law	3
2	MM3711	Integrated Marketing Communications	3
2	MM4751	Marketing Strategy	3
1 & 2	MM4942	Marketing Capstone Project	3
2	MMxxxx	Specialist Elective 2	3
2		Service-Learning	3
			18
Total minimum academic credits: 72 plus *Training credits in WIE (FB3001): 3			

Notes: Depending on an individual's academic merits, the credit requirement for graduation is between 60 and 75.

4.4 Broad Discipline of Business

The Broad Discipline programme will lead to one of the following BBA(Hons) awards:

- BBA (Honours) in Accountancy
- BBA (Honours) in Accounting and Finance
- BBA (Honours) in Financial Services
- BBA (Honours) in Global Supply Chain Management
- BBA (Honours) in International Shipping and Transport Logistics
- BBA (Honours) in Management
- BBA (Honours) in Marketing

Instead of applying to each Business programme separately, local students who are interested in the above programmes can apply for admission to this Broad Discipline programme, which allows them the flexibility to take a range of subjects in business before making a decision to choose a Major.

There is no quota restriction and students will be free to pursue any one of the seven awards.

Programme Structure

Students will study some common subjects together with students from other business disciplines. They are exposed to different business disciplines which can help them to make an informed choice about a suitable award within the BBA Scheme. Students will be articulated to the corresponding curriculum of their chosen BBA award in the first semester or second semester of Year 2.

Indicative Progression Pattern of Broad Discipline of Business

Suggested Semester	Code	Subject	Credit
Year 1 (Semester 1)			
1	AMA1501	Introduction to Statistics for Business	3
1	AF1605	Introduction to Economics ⁽¹⁾	3
1	APSS111	Introduction to Psychology ⁽²⁾	3
1		LCR-English 1	3
1		LCR-Chinese 1	3
1	FB1003	Freshman Seminar	3
1 or 2		Healthy Lifestyle	0
			18
Year 1 (Semester 2)			
2	AF2108	Financial Accounting ⁽³⁾	3
2	LGT2106	Principles of Operations Management ⁽¹⁾⁽³⁾	3
2	MM2021	Management and Organisation ⁽³⁾	3
2	MM1051	Tango! Managing Self & Leading Others ⁽⁴⁾	3
2		LCR-English 2	3
			15

Year 2 (Semester 1)			
1	AF2110	Management Accounting 1	3
1	AF2504	Introduction to Business Law	3
1	AF2602	Global Economic Environment	3
1	MM2422	Managing Business Information Systems & Applications	3
1	APSS112	Introduction to Sociology ⁽²⁾	3
			15
Total minimum academic credits: 120			
plus			
Training credits in WIE (FB3001): 3			

Notes:

- (1) *Cluster Area in Community, Organization and Globalization under GUR can be fulfilled by AF1605 Introduction to Economics, LGT2106 Principles of Operations Management and MM2711 Introduction to Marketing;*
- (2) *Cluster Area in Human Nature, Relations and Development under GUR can be fulfilled by APSS111 Introduction to Psychology and APSS112 Introduction to Sociology;*
- (3) *To facilitate BD students' decision in choosing the suitable BBA Major, students are given the opportunity to take the following core introductory subjects to the respective BBA Major at their own choice: AF2108 Financial Accounting, LGT2106 Principles of Operations Management and MM2021 Management and Organisation. These 3 subjects are also compulsory core subjects in all BBA Majors;*
- (4) *'Leadership and Intra-personal Development' under GUR can be fulfilled by MM1051 Tango! Managing Self & Leading Others.*

4.5 Minor

Students who opt for Minor study will be subject to the following regulations.

- (i) A Minor programme is a collection of subjects totalling 18 credits with at least 50% (9 credits) of the subjects at Level 3 or above. The subjects under a Minor should have a coherent theme introducing students to a focused area of study.
- (ii) Students interested in a Minor must submit their applications to and obtain approval from the Minor-offering Department, at the start of second year of study;
- (iii) Students are expected to complete their approved Minor as part of their graduation requirements. Students who wish to withdraw from a Minor need to apply for approval officially from the Minor offering department, prior to the end of the add/drop period of the last Semester of study;
- (iv) Students with approved Minor will be given a higher priority in taking the Minor subjects over the students who take the subjects as free-electives; 'Free electives' under the 4-year undergraduate degree programmes refers to any subjects (including CAR subjects) offered by the University, unless otherwise specified;
- (v) Subject to approval by the Minor-offering Department, students may count up to 6 credits from their Major/GUR [including Language Communication Requirement (LCR) subjects at proficiency level] towards their chosen Minor;
- (vi) Only students with a GPA of 2.5 or above can be considered for Minor study enrolment. The Minor-offering Department may set a quota and additional admission requirements for their Minor; and
- (vii) Students are required to obtain a GPA of at least 2.0 in order to satisfy the requirement for graduation with a Major plus a Minor.

5. WORK-INTEGRATED EDUCATION (WIE)

FB3001 Work-Integrated Education WIE (3 training credits) is a mandatory component of BBA curriculum. It is “work-based learning experiences which take place in an organizational context relevant to a student’s future profession, or the development of generic skills that will be valuable in that profession.” An essential and compulsory component in the Faculty’s BBA education, WIE facilitates the integration of knowledge, skills, and competences between the classroom and the real-world, thus equipping students with valuable work experience as well as practical readiness for full-time employment upon graduation.

WIE Assessment:

Students are required to obtain a “Pass” in the subject **FB3001 Work-Integrated Education** upon graduation, i.e. successfully complete at least 300 hours of placements in one or more organizations OR through one or more eligible WIE activities. The WIE fulfillment will be recorded under “Other Fulfillment” in SRS System as well.

5.1 Learning Objectives of WIE

At the end of WIE, the student should be able to:

5.1.1 Areas of Personal Development

- a. Appreciate his/her own learning style and determine the best approach to enhancing his/her learning;
- b. Appreciate his/her own learning and development needs and chart his/her learning and development plan for the next 3-5 years;
- c. Make informed choices/preferences for his/her career and formulate a suitable plan for achieving it;

5.1.2 Areas of Workplace Appreciation

- a. Understand the issues involved in the practical application of the skills, knowledge and information acquired in the University environment;
- b. Appreciate the requirements and demands of the real-world work environment, especially in the industry/sector where WIE was done so as to facilitate the smooth transition to full-time employment after graduation;
- c. Identify factors in organizational culture that influences sustainable competitive advantage, excellence, and progress.

5.1.3 Areas of Key Skills

- a. Develop strategic approaches to anticipate and handle challenges;
- b. Analyze problems and strategize solutions;
- c. Appreciate the computing skills he/she has acquired, determine areas that require further development, and make plans to achieve them;
- d. Communicate effectively and confidently;
- e. Work effectively individually as well as in teams;

5.2 Requirements of WIE

- 5.2.1** A student must acquire at least 3 'WIE credits' (classified as training credits) in addition to the 120 academic credits to be eligible for graduation and is highly recommended to complete the requirement before promotion to the final year of study.
- 5.2.2** Students may choose to fulfill the 300-hour requirement through placements in one or more organizations OR through one or more eligible WIE activities. The 300 hours of internship work is approximately equivalent to 8 weeks of full-time internship engagement.
- 5.2.3** Students can occupy more than 1 WIE experience, but each WIE experience should be at least 100 hours to make it more meaningful.
- 5.2.4** All work for WIE credit must be structured and measurable, where structured means that objectives are set for the work experience before it begins and measurable means that the attainment of those objectives is monitored and attested to by a person other than the student, usually the internship supervisor at the organisation where the work is done.
- 5.2.5** All work for WIE credits must take place in an organizational context relevant to the degree programme for which students are enrolled, OR must demonstrate that it develops generic transferable skills relevant to that programme.
- 5.2.6** WIE credits can be achieved through full-time, part-time, or project work done locally or overseas. The list of activities that can count towards earning WIE credits is available at the Faculty's WIE website www.polyu.edu.hk/fb/wie.
- 5.2.7** Students may participate in internship positions secured by themselves and/or the Faculty, their School or Department. Internship placements secured by students must be approved by their School/Department WIE Coordinator in order for the hours to be counted towards achieving their WIE credit.
- 5.2.8** In general, it is recommended that students start their WIE internships after two semesters of studies in PolyU.
- 5.2.9** Students in their first year of studies in the University are encouraged to prepare for their WIE experience through a series of workshops and seminars organized by the University or the Faculty WIE Office. Up to thirty (30) hours of approved WIE training can be counted towards WIE

5.3 Compensation and Regulatory Matters

- 5.3.1** WIE does not necessarily have to be paid. In general, the University will make no payment to students for WIE, and any payment by employers will be at the employer's discretion.
- 5.3.2** If there is an employment relationship between the student and the WIE offering organization, both the Minimum Wage Ordinance (http://www.labour.gov.hk/eng/news/pdf/Notes_for_Student_Employees_and_Employers_2015.pdf) and the MPF Ordinance (http://www.mpfa.org.hk/eng/information_centre/faq/index.jsp) should be applied. However, these are subject to Employment Ordinance (<http://www.labour.gov.hk/eng/legislat/content2.htm>) that may apply during the internship period.

- 5.3.3 The University covers all students under the Group Personal Accident insurance scheme which is applied world-wide. Students going on internship placements outside Hong Kong are encouraged to take up additional travel insurance.
- 5.3.4 Students going on internship placements in the Chinese Mainland or at international locations may apply for the University's Offshore WIE Sponsorship (OWS), offered via the Office of Careers and Placement Services (CAPS).
- 5.3.5 Non-local students are not exempted from WIE. However, they are required to obtain a valid "No Objection Letter" (NOL) issued by the Hong Kong Immigration Department (IMMD) before any engagement in a university recognized internship in Hong Kong.
- 5.3.6 The WIE requirements do not apply to overseas students on exchange in the University.

5.4 WIE Placement Procedures

- 5.4.1 WIE placements opportunities and relevant WIE announcements are made available year-round to relevant students via FB WIE Online System (<http://www.fb.polyu.edu.hk/wieonline>). It is students' responsibility to search for suitable placements and follow the respective application procedures and deadlines.
- 5.4.2 Suitable candidates will be selected from a short-list of applicants through tests and/or interviews (individual or group) by the Faculty/Department WIE Office as well as the WIE partner organizations.

5.5 WIE Assessments

- 5.5.1 Assessment of WIE will be on a pass/fail basis, based upon:
 - a. An initial statement from the student on the objectives and duration of the work; and
 - b. A statement from the student's employer(s) confirming the duration of the work and satisfactory performance; and
 - c. A Self-Evaluation/Reflection from the student.

These three requirements need to be met for every WIE activity.

- 5.5.2 As with every course of study in their degree programme, students should note that it is their responsibility to secure the necessary 3 WIE credits for graduation.
- 5.5.3 Students should take note that their termination of internships without valid reason(s) or their being terminated from their internship will render them to have failed the WIE activity.

5.6 Information on WIE

Further information and updates on WIE is available at www.polyu.edu.hk/fb/wie as well as through students' campus email regularly.

Students should contact their School/Department WIE Coordinator for assistance should they have questions and queries.

6. LANGUAGE EXIT TESTS

All BBA students in the Faculty of Business are required to sit for the Graduating Students' Language Proficiency Assessments (GSLPAs) in both Chinese and English before graduation. Except for those who are given exemptions from attempting the GSLPAs, students who have not taken both of the GSLPAs shall not be eligible for graduation.

7. EXAMINATION AND ASSESSMENT

7.1 Introduction

- 7.1.1** The University's *General Assessment Regulations (GAR)* shall apply to the BBA (Hons) Scheme. The specific assessment regulations are set out here, having been developed within the framework of the *GAR*. These regulations apply to all students within the BBA (Hons) Scheme. Students whose Major lies outside the Scheme, but who are taking a Minor from within the Scheme are subject to the academic regulations of the single-discipline programme from which their Major programme is developed.
- 7.1.2** Students progress by credit accumulation, i.e. credits earned by passing individual subjects can be accumulated and counted towards the final award.
- 7.1.3** A 'level' in a programme indicates the intellectual demand placed upon students and may characterize each subject with respect to its recommended sequencing within that programme.
- 7.1.4** A 'subject' is defined as a discrete section of the programme which is assigned a separate assessment. A list of subjects, together with their weightings, is included in this document.
- 7.1.5** The language of assessment shall be English, unless approval is given for it to be otherwise.

7.2 Principles of Assessment

- 7.2.1** Assessment of learning and assessment for learning are both important for assuring the quality of student learning. Assessment of learning is to evaluate whether students have achieved the intended learning outcomes of the subjects that they have taken and have attained the overall learning outcomes of the academic programme at the end of their study at a standard appropriate to the award. Appropriate methods of assessment that align with the intended learning outcomes should be designed for this purpose. The assessment methods will also enable the teacher to differentiate students' different levels of performance within the subject. Assessment for learning is to engage students in productive learning activities through purposefully designed assessment tasks.
- 7.2.2** Assessment will also serve as feedback to students. Students will be informed of their performance in the assessment so that they are aware of their progress and attainment.
- 7.2.3** The ultimate authority in the University for the confirmation of academic decisions is the Senate, but for practical reasons, the Senate has delegated to the Faculty Board the authority to confirm the decisions of Boards of Examiners provided these are made within the framework of the General Assessment Regulations. Recommendations from Board of Examiners which fall outside these Regulations shall be ratified by the Academic Regulations Committee and reported to the Senate.

7.3 Assessment Methods

- 7.3.1** Students' performance in a subject shall be assessed by continuous assessment and/or examinations as deemed appropriate. Where both methods are used, the weighting of each in the overall subject grade is stated in the respective subject syllabus.
- 7.3.2** Continuous assessment may include tests, assignments, projects, laboratory work, field exercises, presentations and other forms of classroom participation. The contribution made by each student in coursework involving a group effort shall be determined and assessed separately and this can result in different grades being awarded to students in the same group.
- 7.3.3** Assessment methods and parameters of subjects shall be determined by the subject offering department.
- 7.3.4** At the beginning of each semester, the subject teacher should inform students of the details of the methods of assessments to be used within the assessment framework as specified in this Definitive Programme Document / Programme Guide.
- 7.3.5** To ensure that students' English capabilities are better developed, every subject offered by FB departments would contain some significant elements of individual writing tasks in English.

7.4 Progression/Academic Probation/Deregistration

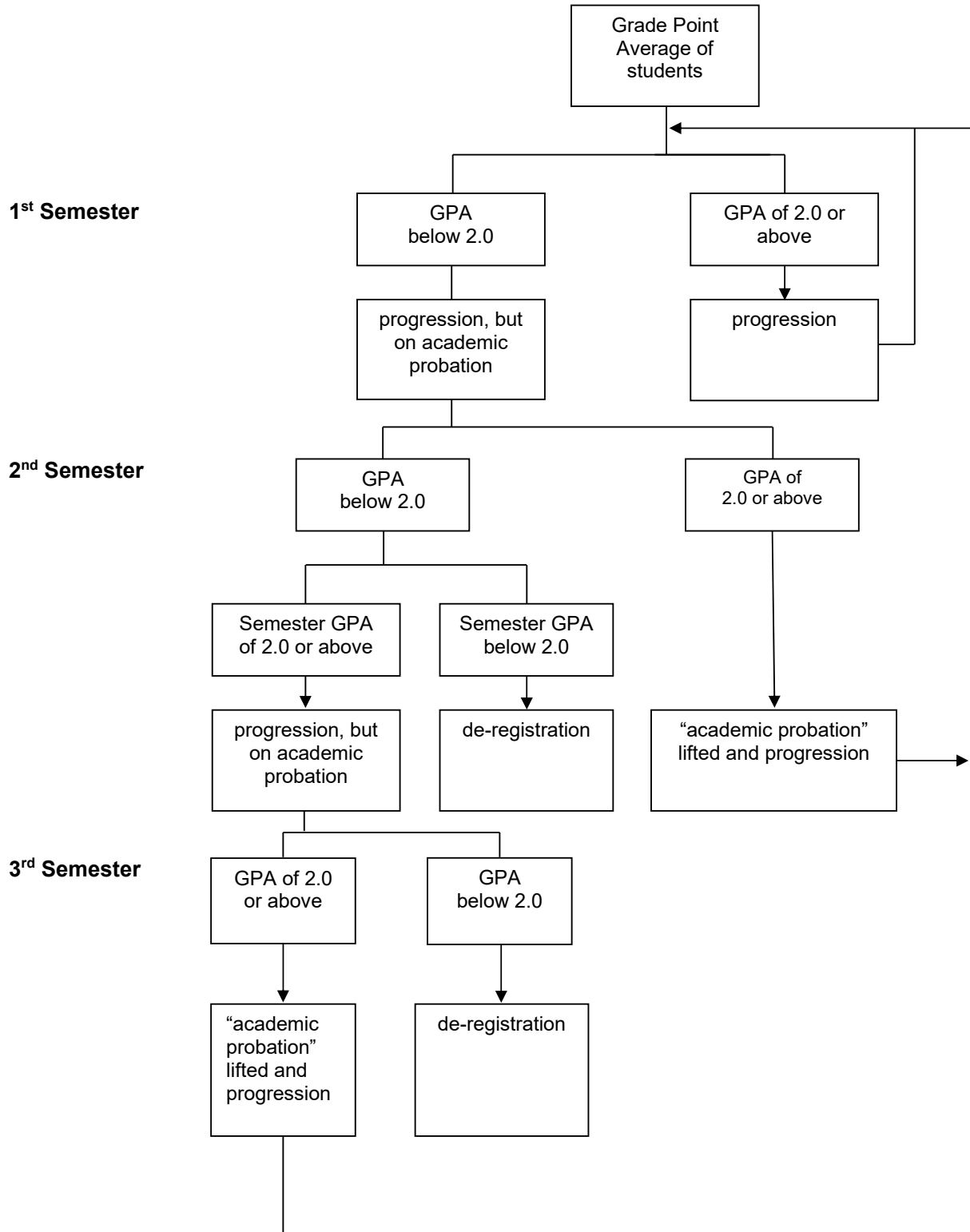
- 7.4.1** The Board of Examiners shall, at the end of each semester (except for Summer Term unless there are students who are eligible to graduate after completion of Summer Term subjects), determine whether each student is
- (i) eligible for progression towards an award; or
 - (ii) eligible for an award; or
 - (iii) required to be deregistered from the programme.
- 7.4.2** Students with a Grade Point Average (GPA) (see Section 7.7.3 below) lower than 2.0, will be put on academic probation in the following semester. When a student is able to pull their GPA up to 2.0 or above at the end of the probation semester, the status of "academic probation" will be lifted. The status of "academic probation" will be reflected in the examination result notification but not in transcript of studies.
- 7.4.3** Students will have 'progressing' status unless they fall within any one of the following categories, which may be regarded as grounds for deregistration from the programme:
- (i) the student has exceeded the maximum period of registration for that programme as specified in this Definitive Programme Document / Programme Guide; or
 - (ii) the student's GPA is lower than 2.0 for two consecutive semesters and his Semester GPA in the second semester is also lower than 2.0; or,
 - (iii) the student's GPA is lower than 2.0 for three consecutive semesters.

When a student falls within the categories as stipulated above, the Board of Examiners shall de-register the student from the programme without exception.

- 7.4.4** The progression of students to the following academic year will not be affected by the GPA obtained in Summer Term.

- 7.4.5** A student may be de-registered from the programme enrolled before the time frame specified in Sections 7.4.3(ii) and 7.4.3(iii) above if their academic performance is poor to the extent that the Board of Examiners deems that the chance of attaining a GPA of 2.0 at the end of the programme is slim or impossible.
- 7.4.6** If the student is not satisfied with the de-registration decision of the Board of Examiners, he/she can lodge an appeal. All such appeal cases will be referred directly to Academic Appeals Committee (AAC) for final decision. Views of Faculties/Schools/Departments will be sought and made available to AAC for reference.

Diagram 1: PROGRESSION AND ACADEMIC PROBATION SYSTEM



7.5 Retaking of Subjects

- 7.5.1** Students may retake any subject for the purpose of improving their grade without having to seek approval, but they must retake a compulsory subject which they have failed, i.e. obtained an F grade. However, students who have passed a General University Requirements (GUR) subject are not allowed to re-take the same GUR subject for the purpose of improving their grade. Retaking of subjects is with the condition that the maximum study load of 21 credits per semester is not exceeded. Students wishing to retake passed subjects will be accorded a lower priority than those who are required to retake (due to failure in a compulsory subject) and can only do so if places are available.
- 7.5.2** The number of retakes of a subject is not restricted. Only the grade obtained in the final attempt of retaking (even if the retake grade is lower than the original grade for originally passed subject) will be included in the calculation of the Grade Point Average (GPA). If students have passed a subject but failed after retake, credits accumulated for passing the subject in a previous attempt will remain valid for satisfying the credit requirement for award. (The grades obtained in previous attempts will only be reflected in transcript of studies.)
- 7.5.3** In cases where a student takes another subject to replace a failed elective subject, the fail grade will be taken into account in the calculation of the GPA, despite the passing of the replacement subject. Likewise, students who fail a Cluster Area Requirement (CAR) subject may need to take another subject from the same Cluster Area in order to fulfill this part of the GUR, since the original CAR subject may not be offered; in such cases, the fail grade for the first CAR subject will be taken into account in the calculation of the GPA, despite the passing of the second CAR subject. In the circumstances when students do not have a choice to retake a failed subject, such as when the failed subject has been phased out, a 'tie-subject' arrangement can be made with the approval of the Faculty/School Board. Under the arrangement, another appropriate subject can be taken as equivalent to the subject which is not offered. Upon passing the equivalent subject, the fail grade of the original subject will be replaced by the latest grade of the retake subject and the failure grade of the original subject will not be taken into account in the calculation of the GPA.

7.6 Exceptional Circumstances

Absence from an Assessment Component

- 7.6.1** If a student is unable to complete all the assessment components of a subject, due to illness or other circumstances which are beyond his control and considered by the subject offering Department as legitimate, the Department will determine whether the student will have to complete a late assessment and, if so, by what means. This late assessment shall take place at the earliest opportunity, and before the commencement of the following academic year (except that for Summer Term, which may take place within 3 weeks after the finalisation of Summer Term results). If the late assessment cannot be completed before the commencement of the following academic year, the Faculty Board Chairman shall decide on an appropriate time for completion of the late assessment.
- 7.6.2** The student concerned is required to submit his/her application for late assessment in writing to the Head of Department offering the subject, within five working days from the date of the examination, together with any supporting documents. Approval of applications for late assessment and the means for such late assessments shall be given by the Head of Department offering the subject or the Subject Lecturer concerned, in consultation with the Programme Leader.

Aegrotat Award

- 7.6.3** If a student is unable to complete the requirements of the programme in question for the award due to very serious illness, or other very special circumstances which are beyond his control, and considered by the Board of Examiners as legitimate, the Faculty Board will determine whether the student will be granted an aegrotat award. Aegrotat award will be granted under very exceptional circumstances.
- 7.6.4** A student who has been offered an aegrotat award shall have the right to opt either to accept such an award, or request to be assessed on another occasion to be stipulated by the Board of Examiners; the student's exercise of this option shall be irrevocable.
- 7.6.5** The acceptance of an aegrotat award by a student shall disqualify him from any subsequent assessment for the same award.
- 7.6.6** An aegrotat award shall normally not be classified, and the award parchment shall not state that it is an aegrotat award. However, the Board of Examiners may determine whether the award should be classified provided that they have adequate information on the students' academic performance.

Other Particular Circumstances

- 7.6.7** A student's particular circumstances may influence the procedures for assessment but not the standard of performance expected in assessment.

7.7 Grading

- 7.7.1** Assessment grades shall be awarded on a criterion-referenced basis. A student's overall performance in a subject (including GUR subjects) shall be graded as follows:

<i>Subject grade</i>	<i>Short description</i>	<i>Elaboration on subject grading description</i>
A+	Exceptionally Outstanding	The student's work is exceptionally outstanding. It exceeds the intended subject learning outcomes in all regards.
A	Outstanding	The student's work is outstanding. It exceeds the intended subject learning outcomes in nearly all regards.
B+	Very Good	The student's work is very good. It exceeds the intended subject learning outcomes in most regards.
B	Good	The student's work is good. It exceeds the intended subject learning outcomes in some regards.
C+	Wholly Satisfactory	The student's work is wholly satisfactory. It fully meets the intended subject learning outcomes.
C	Satisfactory	The student's work is satisfactory. It largely meets the intended subject learning outcomes.
D+	Barely Satisfactory	The student's work is barely satisfactory. It marginally meets the intended subject learning outcomes.

D	Barely Adequate	The student's work is barely adequate. It meets the intended subject learning outcomes only in some regards.
F	Inadequate	The student's work is inadequate. It fails to meet many of the intended subject learning outcomes.

'F' is a subject failure grade, whilst all others ('D' to 'A+') are subject passing grades. No credit will be earned if a subject is failed.

7.7.2 A numeral grade point is assigned to each subject grade, as follows:

Grade	Grade Point
A+	4.5
A	4
B+	3.5
B	3
C+	2.5
C	2
D+	1.5
D	1
F	0

7.7.3 At the end of each semester/term, a Grade Point Average (GPA) will be computed based on the grade point of all the subjects as follows:

$$\text{GPA} = \frac{\sum_n \text{Subject Grade Point} \times \text{Subject Credit Value}}{\sum_n \text{Subject Credit Value}}$$

where n = number of all subjects (inclusive of failed subjects) taken by the student up to and including the latest semester/term, but for subjects which have been retaken, only the grade obtained in the final attempt will be included in the GPA calculation

In addition, the following subjects will be excluded from the GPA calculation:

- (i) Exempted subjects
- (ii) Ungraded subjects
- (iii) Incomplete subjects
- (iv) Subjects for which credit transfer has been approved without any grade assigned[^]
- (v) Subjects from which a student has been allowed to withdraw (i.e. those with the grade 'W')

[^]Subjects taken in PolyU or elsewhere and with grades assigned, and for which credit transfer has been approved, will be included in the GPA calculation.

Subject which has been given an "S" subject code, i.e. absent from examination, will be included in the GPA calculation and will be counted as "zero" grade point. GPA is thus the unweighted cumulative average calculated for a student for all relevant subjects taken from the start of the programme to a particular reference point of time. GPA is an indicator of overall performance and is capped at 4.0.

7.7.4 For the BBA (Hons) Scheme, the Work-Integrated Education training credits will not be counted in the GPA calculation.

7.7.5 In order to pass in a subject offered by the School/Departments in the Faculty of Business (i.e. subjects with prefix of AF/LGT/MM/FB), all students have to obtain Grade D or above in both the continuous assessment and examination components of the subject.

7.8 Different Types of GPA's

7.8.1 GPA's will be calculated for each Semester including the Summer Term. This Semester GPA will be used to determine students' eligibility to progress to the next Semester alongside with the 'cumulative GPA'. However, the Semester GPA calculated for the Summer Term will not be used for this purpose, unless the Summer Term study is mandatory for all students of the programme concerned and constitutes part of the graduation requirements.

7.8.2 The GPA calculated after the second Semester of the students' study is therefore a 'cumulative' GPA of all the subjects taken so far by students, and without applying any level weighting.

7.8.3 Along with the 'cumulative' GPA, a weighted GPA will also be calculated, to give an indication to the Board of Examiners on the award classification which a student will likely get if he makes steady progress on his academic studies. GUR subjects will be included in the calculation of weighted GPA for all programmes.

7.8.4 When a student has satisfied the requirements for award, an award GPA will be calculated to determine his award classification. GUR subjects will be included in the calculation of award GPA for all programmes.

7.8.5 For students taking the Major/Minor study route, a separate GPA will be calculated for their Major and Minor programmes. The Major GPA will be used to determine his award classification, which will be so reflected on the award parchment. The Minor GPA can be used as a reference for Board of Examiners to moderate the award classification for the Major.

7.8.6 The relationship between the different types of GPA's, and the methods for calculating each, is further explained in the following table.

Different types of GPAs, and their calculation methods

Types of GPA	Purpose	Rules for GPA calculation
GPA	Determine Progression/ Graduation	<p>(1) All academic subjects taken by the student throughout his study, both inside and outside the programme curriculum, are included in the GPA calculation.</p> <p>(2) For training subjects, including WIE and Clinical/Field subjects, departments can decide whether to include them in the GPA calculation.</p> <p>(3) For retake subjects, only the last attempt will be taken in the GPA calculation.</p> <p>(4) Level weighting, if any, will be ignored.</p>

Types of GPA	Purpose	Rules for GPA calculation
Semester GPA	Determine Progression	Similar to the rules for GPA as described above, except that only subjects taken in that Semester, including retaken subjects, will be included in the calculation.
Weighted GPA	To give an interim indication on the likely Award GPA	<p>(1) Similar to the rules for GPA, except that only subjects inside the programme curriculum concerned will be included in the calculation. Subjects outside the programme curriculum will be excluded.</p> <p>(2) Departments can decide whether the training subjects are to be counted towards the Weighted GPA.</p> <p>(3) For retake subjects, only the last attempt will be taken in the Weighted GPA calculation.</p> <p>(4) The weighted GPA will be the same as the Award GPA unless a student has taken more subjects than required.</p>
Major/Minor GPA	For reference and determination of award classification	<p><u>Major/Minor GPA</u></p> <p>(1) Only subjects inside the curriculum of the Major/Minor Programmes will be taken in the Major/ Minor GPA calculation.</p> <p>(2) Departments can decide whether the training subjects, are to be counted towards the Major/Minor GPA.</p> <p>(3) For retake subjects, only the last attempt will be taken in the Major/Minor GPA calculation.</p> <p>(4) Up to 6 credits from the Major/GUR [including Language Communication Requirements (LCR) subjects at proficiency level] can be counted towards the chosen Minor.</p> <p><u>Major GPA</u> Level weighting will be included in the calculation of Major GPA.</p> <p><u>Minor GPA</u> Level weighting will <u>not</u> be included in the calculation of Minor GPA.</p>
Award GPA	For determination of award classification	<p>If the student has not taken more subjects than required, the Award GPA will be as follows:</p> <p>(1) For single Major: Award GPA = Weighted GPA</p> <p>(2) For Major/Minor programmes: Award GPA = Major GPA</p>

7.9 Eligibility for Award

7.9.1 Students are eligible for an award if they satisfy all the conditions listed below:

- (i) Complete successfully a minimum of 120 credits⁴, and
- (ii) Earn a cumulative GPA of 2.00 or above at graduation, and
- (iii) Complete 3 training credits (300 hours) of Work-integrated Education (WIE);
- (iv) Satisfy the residential requirement for at least 1/3 of the credits to be completed for the award he is currently enrolled, and
- (v) Satisfy the following GUR requirements:

(a) Language and Communication Requirements ⁵	9 credits
(b) Freshman Seminar	3 credits
(c) Leadership and Intra-Personal Development	3 credits
(d) Service-Learning	3 credits
(e) Cluster Areas Requirement (CAR)	12 credits
(f) China Studies Requirement	(3 of the 12 CAR credits)
(g) Healthy Lifestyle ⁶	Non-credit bearing
	Total = 30 credits

- (vi) Satisfy the requirement of Faculty of Business of completion of the Graduating Students Language Proficiency Assessment (GSLPA) in both Chinese and English in student's final year at PolyU.

7.9.2 There are subjects which are designed to fulfil the credit requirement of different types of subject. Students passing these subjects will be regarded as having fulfilled the credit requirements of the particular types of subject concerned. Nevertheless, the subject passed will only be counted once in fulfilling the credit requirements of the award, and the students will be required to take another subject in order to meet the total credit requirement of the programme concerned.

Senior Year intakes admitted to the 4-year Undergraduate Degree programmes on the strength of the Associate Degree/Higher Diploma qualifications are required to complete at least 60 credits in order to be eligible for a Bachelor's degree. Exemption may be given from subjects already taken in the previous Associate Degree/Higher Diploma studies. In that case, students should take other electives (including free electives) instead to make up the total of 60 credits required. For students who are admitted on the basis of academic qualification(s) more advanced than Associate Degree/Higher Diploma, such as the advanced stage of a 4-year degree curriculum programme, Departments can continue to grant credit transfer as appropriate, so as to give recognition to the advanced study taken. These students can take fewer than 60 credits for attaining the award. The proportion of these students should remain low.

Students are required to graduate as soon as they satisfy all the conditions for award (see Section 7.9.1 above). The student concerned is required to apply for graduation,

⁴ This minimum only applies to students who are admitted through the normal route.

⁵ Non-Chinese speakers and those students whose Chinese standards are at junior secondary level or below will by default be exempted from the DSR - Chinese and CAR - Chinese Reading and Writing requirements. However, this group of students would still be required to take one Chinese LCR subject to fulfil their Chinese LCR

⁶ Students admitted to the programmes as Senior Year intakes are not required to take the Healthy Lifestyle Programme. Advanced Standing students are required to take HLS (except for those who are HD/AD holders who follow the Senior Year/Articulation Degree programme GUR curriculum).

in the semester in which he is able to fulfill all his graduation requirements, and after the add/drop period for that semester has ended.

Level-0 subjects and training subjects (i.e. WIE) will not be counted to fulfill free elective requirement for graduation purpose.

7.9.3 Students Taking the Major/Minor Option

Students taking the Major/Minor option will be considered for an award when they have satisfied the requirements for both the Major and Minor studies (i.e. having a GPA of 2.0 or above) and have also submitted an application for graduation. If the 18 credits taken for the approved Minor study can meet the requirements for that Minor, the Major students may apply to graduate with a specific Minor, in addition to their Major. Otherwise, students will graduate with a Major only.

Subject to approval by the Minor-offering Department, students may count up to 6 credits from their Major/GUR [including Language Communication Requirements (LCR) subjects at proficiency level] towards their chosen Minor.

7.10 Guidelines for Award Classification

7.10.1 The guidelines for award classification are set out in this section. In using these guidelines, the Board of Examiners shall exercise its judgement in coming to its conclusions as to the award for each student, and where appropriate, may use other relevant information.

7.10.2 The Weighted GPA will be used as a guide for helping to determine award classifications. The Weighted GPA will be computed as follows:

$$\text{Weighted GPA} = \frac{\sum_n \text{Subject Grade Point} \times \text{Subject Credit Value} \times W_i}{\sum_n \text{Subject Credit Value} \times W_i}$$

Where W_i = *weighting of between 0 and 1, to be assigned according to the level of the subject*

n = *number of subjects counted in GPA calculation as set out in section 7.7.3*

The level weightings assigned will be applied across all subjects of the same level within a programme. The weighting of each level is a measure of the relevance of the level to the classification of the award. The weights for the BBA (Hons) Scheme are as follows:

Level 1 subjects	0.2
Level 2 subjects	0.2
Level 3 subjects	0.3
Level 4 subjects	0.3

The Weighted GPA is capped at 4.0.

7.10.3 Any subjects passed after the graduation requirement has been met will not be taken into account of in the grade point calculation for award classification.

7.11 Students Taking the Major/ Minor Studies

- 7.11.1** For students who have completed a Major/Minor programme, a single classification will be awarded and their award classification will mainly be based on the "Major GPA", but it can be moderated by the Board of Examiners with reference to the "Minor GPA". For students who have completed a Major programme combined with free electives, their award classification will be determined by their "Major GPA" and the grades obtained for the free electives.
- 7.11.2** "Major GPA" is derived based on all subjects of the Major programme, including those meeting the mandatory General University Requirements (GUR) and programme-specific language requirement, but not necessarily including the training credits.
- 7.11.3** "Minor GPA" is derived based on the 18 credits of specific Minor programme. "Minor GPA" is unweighted.
- 7.11.4** The "Major GPA" and the "Minor GPA" will be presented separately to the Board of Examiners for consideration. The guidelines for determining award classification as stipulated in Sections 7.12 below are applicable to programmes with Major/Minor studies.
- 7.11.5** Where a student has a high GPA for his Major but a lower GPA for his Minor, he will not be 'penalised' in respect of his award classification, which is attached to the Major. On the other hand, if a student has a lower GPA for his Major than his GPA for the Minor, the Board of Examiners may consider giving the student a higher award classification than with reference to his Major GPA.

7.12 Classification of awards

7.12.1 For Honours degree programmes, the awards will be classified as follows:

First Class Honours
Second Class Honours (Division 1)
Second Class Honours (Division 2)
Third Class Honours

7.12.2 The following are guidelines for Boards of Examiners' reference in determining award classifications:

Honours Degree	Guidelines
1 st	The student's performance/attainment is outstanding, and identifies him as exceptionally able in the field covered by the programme in question.
2:i	The student has reached a standard of performance/attainment which is more than satisfactory but less than outstanding.
2:ii	The student has reached a standard of performance/attainment judged to be satisfactory, and clearly higher than the 'essential minimum' required for graduation.
3 rd	The student has attained the 'essential minimum' required for graduation at a standard ranging from just adequate to just satisfactory.

- 7.12.3** Under exceptional circumstances, a student who has completed an Honours degree programme, but has not attained Honours standard, may be awarded a Pass-without-Honours degree. A Pass-without-Honours degree award will be recommended, when the student has demonstrated a level of final attainment which is below the 'essential minimum' required for graduation with Honours from the programme in question, but when he has nonetheless covered the prescribed work of the programme in an adequate fashion, while failing to show sufficient evidence of the intellectual calibre expected of Honours degree graduates. For example, if a student in an Honours degree programme has a Grade Point Average (GPA) of 2.0 or more, but his Weighted GPA is less than 2.0, he may be considered for a Pass-without-Honours classification. A Pass-without-Honours is an unclassified award, but the award parchment will not include this specification.
- 7.12.4** Students who have committed academic dishonesty will be subject to the penalty of the lowering of award classification by one level. For undergraduate students who should be awarded a Third class Honours degree, they will be downgraded to a Pass-without-Honours. The minimum of downgraded overall result will be kept at a Pass. In rare circumstances where both the Student Discipline Committee and Board of Examiners of a Department consider that there are strong justifications showing the offence be less serious, the requirement for lowering the award classification can be waived.
- 7.12.5** The official award parchment of the University records the full name of the recipient, together with the title of the degree, the Honours classification obtained by the student, and date of the award.

Irrespective of whether the students graduate from a Major programme or a Major/Minor programme, the award title to be reflected on the award parchment is identical, which will read as follows:

...has been awarded the degree of
(say) BACHELOR OF BUSINESS ADMINISTRATION IN ACCOUNTANCY
with First Class Honours

The award title of the Minor programme will not be reflected on the parchment. It will be recorded in the Transcript of Studies.

- 7.12.6** The University reserves the right to withhold the issuance of an award parchment to a student who has unsettled matters with the University, or subject to disciplinary action.

7.13 Examination Result Announcements, Transcripts, Testimonials and References

7.13.1 At the end of each semester, where appropriate, examination results are announced online for individual students' checking. It provides information on subjects taken and grades attained, the Grade Point Average (GPA) for all subjects, and the overall result for that semester. The announcement serves as an official notification of the student's academic performance.

7.13.2 A formal transcript of studies will be issued by the University, upon request, to any student registered on a programme offered by the University, and it will include the following information:

- (i) name and student number;
- (ii) title of the programme(s) on which enrolled, or from which graduated;
- (iii) medium of instruction for the programme (applicable only to programmes which are delivered in Chinese and for which both Chinese and English versions are offered);
- (iv) a full academic record, giving subjects taken and grades attained, and the Grade Point Average (GPA) for all subjects;
- (v) credit requirement of the student if different from the normal credit requirement of the programme;
- (vi) where relevant, the final award(s) (including information on the Minor award, if appropriate), with classification and year of award;
- (vii) a statement indicating that the student has completed the Graduating Students' Language Proficiency Assessment (GSLPA) / Work-integrated Education (WIE) activities / Co-curricular Activities / Healthy Lifestyle, as appropriate.

7.13.3 Students may request for a testimonial which is a certification of their studies at the University, but without details on subjects and subject results.

7.13.4 Students may also request for references direct from academic staff/members concerned.

7.13.5 Recording of disciplinary actions in students' records

- (i) With effect from Semester One of 2015/16, disciplinary actions against students' misconducts will be recorded in students' records.
- (ii) Students who are found guilty of academic dishonesty will be subject to the penalty of having the subject result concerned disqualified and be given a failure grade with a remark denoting 'Disqualification of result due to academic dishonesty'. The remark will be shown in the students' record as well as the assessment result notification and transcript of studies, until their leaving the University.
- (iii) Students who have committed disciplinary offences (covering both academic and non-academic related matters) will be put on 'disciplinary probation'. The status of 'disciplinary probation' will be shown in the students' record as well as the assessment result notification, transcript of studies and testimonial during the probation period, until their leaving the University. The disciplinary probation is normally one year unless otherwise decided by the Student Discipline Committee.

7.13.6 The University reserves the right to withhold the issuance of any certificate of study to a student who has unsettled matters with the University, or subject to disciplinary action.

7.14 Student Appeal against Examination Results

7.14.1 A student may appeal against (i) assessment results; and/or, (ii) de-registration decisions by the Board of Examiners.

- (i) For appeals against assessment results (other than de-registration decisions), student should make the appeal in writing to the Head of Department within 7 working days upon the public announcement of the overall results. The host School/ Department will inform the student of the appeal result within 7 working days after receipt of all requisite information for making a decision.
- (ii) For appeals against de-registration decisions, student should make the appeal in writing to the Head of Department within 1 calendar week upon the public announcement of the overall results. A designated form (i.e. AS149) should be used when the student submits the appeals. All such appeal cases will be referred directly to Academic Appeals Committee (AAC) for final decision. Under normal circumstances, the AAC will attempt to complete its consideration of the appeal cases within one calendar week upon receiving the cases, making reference to the recommendations from the Departments and Faculty Deans/School Board Chairmen. The decision of AAC is final within the University.

7.14.2 Appeal may lead to a change in the subject grade, which may go upward as well as downward, upon completion of reviewing the appeal case.

7.14.3 For details, please refer to the current edition of the Student Handbook.

8. MEDIUM OF INSTRUCTION

8.1 English is the medium of instruction. Chinese could only be used in small group discussions/tutorials/practical sessions if and when necessary.

8.2 In the presence of non-Cantonese-speaking students, English should be used all the time.

9. ACADEMIC ADVISING

Academic advising at PolyU aims to help students to make informed and intelligent academic decisions/choices about their study at PolyU that suit their intellectual, professional and personal goals. It is instrumental to promoting student success, and plays a vital role in enhancing students' overall learning experience at PolyU.

To empower you to fulfil the General University Requirements (GUR) and the Discipline Specific Requirements (DSR), there are two systems of academic advising at PolyU - department-based academic advising (primarily for broad discipline and major program matters) and academic advising at the institutional level operated by the Office of General University Requirements (OGUR – primarily for matters related to the GUR).

Academic Advising in Department

After you have embarked on your Major, you will be assigned to one full-time academic staff in your Department who will act as your Academic Advisor throughout your study at PolyU. The primary role of your Academic Advisor is to facilitate your choice of your Major study and Minor/Free Electives, if applicable. You are expected to take initiative to consult your Academic Advisor before subject registration when there is a need. If you take less than the minimum allowable credits or more than the maximum allowable credits in a semester, you will need the approval of your Programme Leader via the Academic Advisor.

It is expected that you meet with your Academic Advisor periodically (at least once a year individually or in group) to discuss your academic plan and aspirations. You are also encouraged to consult your Academic Advisor especially when you are on academic probation/ deregistration.

Roles and Responsibilities of Academic Advisees

To enable you to maximize your gain from academic advising, please note your responsibilities in academic advising as follows:

1. Take personal responsibility for your academic decisions, plans and outcomes.
2. Become familiar with the academic advising policies, resources and infrastructure at PolyU.
3. Understand your Major/Minor requirements and the General University Requirements and monitor your progress with reference to the graduation requirements.
4. Develop a study plan which enables you to complete your undergraduate degree at PolyU.
5. Attend academic advising sessions offered by the Department/Faculty and the Office of General University Requirements.
6. Be prepared for academic advising. Understand your academic progress before meeting your Academic Advisor.
7. If you have any questions regarding your academic study, you should raise them at the academic advising meetings.
8. Have an open mind and be ready to seriously consider advice given by teachers, Academic Advisors and other staff.

9. Read the e-mails and letters sent to you by your Academic Advisor in your Department/Faculty and OGUR Academic Counsellor.
10. Visit the Departmental academic advising website and the OGUR website at least once a semester for updates and new information.
11. Seek help as early as possible. It is a sign of courage.
12. Enjoy your academic advising experience at PolyU.

Useful Links:

Departmental Academic Advising websites

FB : http://www.fb.polyu.edu.hk/academic_advising.aspx

AF : http://www.af.polyu.edu.hk/static_pages/index/12

LMS : <http://www.lms.polyu.edu.hk/academicAdvising.asp>

MM : http://www.polyu.edu.hk/mm/mm_dev/index.php

Office of General University Requirement (OGUR): <http://www.polyu.edu.hk/ogur/>

10. CODE OF CONDUCT FOR STUDENTS IN THE FACULTY OF BUSINESS

Introduction

The University Student Handbook contains a comprehensive statement on Conduct and Discipline, which every student should be aware of. In particular, every student should read, and act on, the section on Plagiarism and Bibliographic referencing.

Plagiarism

- (i) Plagiarism refers to the act of using the creative works of others (e.g. ideas, words, images or sound, etc) in one's own work without proper acknowledge of the sources.
- (ii) Students are required to submit their original work and avoid any possible suggestion of plagiarism in the work they submit for grading or credit.
- (iii) The University/Faculty views plagiarism, whether committed intentionally or because of ignorance or negligence, as a serious disciplinary offence. Excuses such as "not knowing what is required" or "not knowing how to do it" will not be accepted.
- (iv) Depending on the seriousness of the plagiarism cases, they may be referred to the Student Discipline Committee for investigation and decision. If a student is found guilty of the alleged offence, penalties considered appropriate by the Committee may be imposed. These may include:
 - suspension of studies for a specified period of time;
 - expulsion for a specified period or indefinitely; and
 - any other penalties as considered appropriate

Good Manners and Bad Manners

This Code of Conduct is an addition to the information in the Handbook. Its purpose is to explain the expectations that academic staff have for the classroom behaviour of students in the Faculty of Business.

Students who consistently fail to meet these expectations may be excluded from classes or subject to disciplinary action.

More important, students who fail to abide by this Code are developing bad habits that will make them unattractive to employers and in general social situations.

It is GOOD MANNERS to:

- Be punctual for classes. If you are late for a good reason, apologize to the teacher. You have caused them inconvenience. You are also interfering with other students' learning.
- Sit at the front in lecture theatres. It is rude to crowd at the back, leaving the lecturer talking to rows of empty seats at the front.
- Respond to the lecturers when they ask questions.

It is BAD MANNERS to:

- Talk in class when the lecturer is addressing you. It is rude to the lecturer and disturbing for others in the class.

- Leave the class before it is completed. If you cannot stay for the complete class, do not come at all. It is insulting to staff, or to students giving presentations, to leave before they have finished.
- Use your mobile phone in the classroom. Switch it off, or put it on “silent” and do not answer it in class.
- Eat or drink in class. Note that University regulations forbid eating and drinking in teaching rooms.

Lecturers are entitled to ask individual students to leave the classroom if they persist in offending against this code of conduct.

Members of staff in the Faculty of Business expect students to follow this Code of Conduct. It is nothing more than simple politeness.

Use of PolyU E-mail Account

E-mail is an official communication channel among staff and students at PolyU. Students are strongly advised to check their PolyU student e-mails regularly. Missing important information contained in e-mails intentionally or unintentionally will not be accepted as a legitimate reason for their appeal against academic assessments.

Users should not use e-mails in any ways which violate applicable laws and regulations:

- Conducting commercial functions, such as marketing or business transactions
- Sending irrelevant or chain mails to a large number of recipients
- Broadcasting messages which are likely to harass or offend others users
- Any communication which violates applicable laws and regulations

Users should also observe that proper and courteous language should be used in e-mails, and sending e-mails in the name of another person and / or anonymous e-mail is unacceptable. The University’s e-mail address lists are for internal use and may not be distributed to external entities for purpose of mass mailing.

APPENDIX

Appendix 1 - CURRICULUM MAP FOR BBA (HONS) SCHEME

No.	Programme Intended Learning Outcomes	BBA (Hons) in Accountancy (02402-BAC)	BBA (Hons) in Accounting & Finance (02402-BAF)	BBA (Hons) in Financial Services (02402-BFS)	BBA (Hons) in Global Supply Chain Management (02402-GSC)	BBA (Hons) in International Shipping and Transport Logistics (02402-IST)	BBA (Hons) in Management (02402-MGT)	BBA (Hons) in Marketing (02402-MKT)
1.	Communicate effectively in English, Putonghua and written Chinese, at a level appropriate for business purposes and general conversation	Introduced	AF2504 Introduction to Business Law AF2602 Global Economic Environment LCR-ELC(1) LCR-ELC (2) LCR-CBS					
			AF3313 Business Finance ELC3221 Workplace English for Business Students I ELC3222 Workplace English for Business Students II CBS3221P Chinese Language Communication for Business					
		Reinforced & assessed	AF3210 AF4228 AF4230* AF4320 AF4912	AF3210* AF3316 AF3317* AF4228* AF4320 AF4322* AF4331 AF4912	AF3316 AF3317 AF3318 AF3322* AF4322 AF4325* AF4331* AF4912	LGT4209	LGT4208	MM3011 MM3131* MM3151 MM3451* AF3508* MM4111* MM4121* MM4191* MM4351 MM4342 MM4522
Others	<ul style="list-style-type: none"> - Entrance requirements in English and Chinese - English Language Enhancement Programmes (non-credit earning) - Chinese Language Enhancement Programmes (non-credit earning) - English: Independent Language Learning Centre programmes, written assessments in all subjects, international exchanges - Putonghua: Department of Chinese & Bilingual Studies Programmes, Mainland Exchanges, written assessments in subjects taught in Chinese 							

No.	Programme Intended Learning Outcomes		BBA (Hons) in Accountancy (02402-BAC)	BBA (Hons) in Accounting & Finance (02402-BAF)	BBA (Hons) in Financial Services (02402-BFS)	BBA (Hons) in Global Supply Chain Management (02402-GSC)	BBA (Hons) in International Shipping and Transport Logistics (02402-IST)	BBA (Hons) in Management (02402-MGT)	BBA (Hons) in Marketing (02402-MKT)
2.	Demonstrate a global outlook and understand of cultural diversity, globalization and their implications for business	Introduced	AF2602 Global Economic Environment MM2021 Management & Organisation MM2711 Introduction to Marketing FB1003 Freshman Seminar						
		Reinforced & assessed	MM4311 Strategic Management						
			AF4513 Corporate Social Responsibility						
			AF3111 AF4106	AF3111 AF4106* AF4328*	AF4318* AF4325* AF4334*	LGT3207* LGT4021*	LGT3019 LGT3206* LGT4004* LGT4013* LGT4016* LGT4021*	MM2392*; MM3131* MM3151; MM4132* MM4141*; MM4161* MM4181*; MM4191* MM4342; MM4351 MM4391*	MM2392*; MM3711 MM3721; MM3782* MM3791*; MM4391* MM4721*; MM4732 MM4741*; MM4772 MM4781*; MM4791* MM4831*
Others	- Programme level assessment through random sampling using the Global Outlook Inventory, International Exchanges, Mainland Exchanges, exposure to exchange students at PolyU, WIE.								
3.	Apply creative thinking in the business setting;	Introduced	AF2504 Introduction to Business Law MM1051 Tango! Managing Self & Leading Others MM2422 Managing Business Information Systems and Applications MM2711 Introduction to Marketing AMA1501 Introduction to Statistics for Business FB1003 Freshman Seminar						
		Reinforced & assessed	AF3313 Business Finance LGT2106 Principles of Operations Management						
			AF3112 AF4224* AF4229* AF4912	AF3112 AF3317* AF4912	AF3317 AF3318 AF4912	LGT3102 LGT4106 LGT3012* LGT3101* LGT3207* LGT4103* LGT4111* LGT4113* LGT4209	LGT3007* LGT3012* LGT3024* LGT3206* LGT4011* LGT4012* LGT4016* LGT4106* LGT4208	MM2392*; MM3111* MM3131*; MM3151 MM3411*; MM3451* MM3461*; MM4121* MM4181; MM4342 MM4351; MM4391* MM4522*; MM4922	MM2392*; MM3711;MM3721 MM3771*;MM3782* MM3791*;MM3841* MM4391*;MM4711 MM4721*;MM4732 MM4741*;MM4772 ;MM4791* MM4831*;MM4942

No.	Programme Intended Learning Outcomes	BBA (Hons) in Accountancy (02402-BAC)	BBA (Hons) in Accounting & Finance (02402-BAF)	BBA (Hons) in Financial Services (02402-BFS)	BBA (Hons) in Global Supply Chain Management (02402-GSC)	BBA (Hons) in International Shipping and Transport Logistics (02402-IST)	BBA (Hons) in Management (02402-MGT)	BBA (Hons) in Marketing (02402-MKT)	
4.	Identify and respond appropriately to ethical issues as they arise generally and in the business setting	Introduced	AF2108 Financial Accounting AF2110 Management Accounting I AF2504 Introduction to Business Law MM2021 Management & Organisation MM2422 Managing Business Information Systems and Applications MM2711 Introduction to Marketing FB1003 Freshman Seminar						
			Reinforced & assessed	MM4311 Strategic Management					
		AF4513 Corporate Social Responsibility			MM4513 Corporate Social Responsibility				
		AF3111 AF3112 AF3210 AF3507 AF4106* AF4228* AF4320 AF4512*	AF3111 AF3112 AF3210* AF3507 AF4106* AF4228* AF4320	AF4324	LGT3003* LGT3012* LGT3023*	LGT3023 LGT3003* LGT3012* LGT4016* LGT4020*	AF3508*; MM2392 MM3011; MM3111 MM3131*; MM3141 MM3151; MM4111* MM4121; MM4141* MM4151*; MM4161* MM4181*; MM4191* MM4391*	MM2392* MM3782* MM3791* MM4391* MM4781* MM4831* MM4732	
5.	Adopt an entrepreneurial perspective, identifying and evaluating business opportunities as they arise.	Others	- Ethical conduct and decision making is addressed through induction briefings, policies and guidelines on, for example, academic honesty and plagiarism; The Independent Commission Against Corruption (ICAC), as part of their educational outreach programme, provides an annual session for all students on ethical conduct and the avoidance of corruption; Online Tutorial on Academic Integrity.						
		Introduced	FB1003 Freshman Seminar						
		AF4912	AF4912	AF4912	LGT4209	LGT4005 LGT4208	MM2392* MM3451* MM4351 MM4922	MM2392* MM3721 MM3771* MM3841* MM4772 MM4942	

No.	Programme Intended Learning Outcomes		BBA (Hons) in Accountancy (02402-BAC)	BBA (Hons) in Accounting & Finance (02402-BAF)	BBA (Hons) in Financial Services (02402-BFS)	BBA (Hons) in Global Supply Chain Management (02402-GSC)	BBA (Hons) in International Shipping and Transport Logistics (02402-IST)	BBA (Hons) in Management (02402-MGT)	BBA (Hons) in Marketing (02402-MKT)
6.	Understand the applications of information systems in business and evaluate their effectiveness and managerial implications	Introduced	AF2108 Financial Accounting MM2422 Managing Business Information Systems and Applications AMA1501 Introduction to Statistics for Business						
		Reinforced & assessed	AF3211	AF3211*	-	LGT3001 LGT3102 LGT3107 LGT3101* LGT3108* LGT4017* LGT4103*	LGT3001* LGT3004* LGT3022* LGT3024* LGT3108* LGT4017	MM3011 MM3411* MM3451* MM3461* MM4411*	MM3761 MM3771* MM3841* MM4711 MM4741*
7.	Apply basic financial theories, analyze financial reports and understand the operation of financial markets.	Introduced	AF2108 Financial Accounting						
		Reinforced & assessed	AF3313 Business Finance						
			AF3110 AF3111 AF4106 AF4228 AF4320	AF3110; AF3111 AF3316; AF4106* AF4228*; AF4317 AF4320; AF4322* AF4323*; AF4326* AF4328*; AF4331	AF3316; AF3322* AF4317; AF4318* AF4322; AF4325* AF4331*; AF4334*	LGT3207* LGT4021*	LGT3206* LCT4021*		
Others	- Leadership and Intra-personal Development								
8.	Identify and analyze the means by which value is created in goods and services and delivered to users.	Introduced	AF1605 Introduction to Economics AF2110 Management Accounting 1 MM2711 Introduction Marketing						
		Reinforced & assessed	LGT2106 Principles of Operations Management MM4311 Strategic Management						
				-	LGT2009*; LGT3001 LGT3016*; LGT3102 LGT3106*; LGT3107 LGT3207*; LGT4104* LGT4105; LGT4106 LGT4110; LGT4113* LGT4114*; LGT4209	LGT2009; LGT3001* LGT3004*; LGT3016* LGT3019; LGT3020* LGT3024*; LGT3106* LGT3206*; LGT4011* LGT4012*; LGT4013* LGT4015*; LGT4106* LGT4208	MM2392* MM4111* MM4351 MM4391* MM4342	MM2392*; MM3711 MM3721; MM3782* MM3841*; MM4391* MM4711; MM4741* MM4781*; MM4791* MM4732; MM4772 MM4831*	

No.	Programme Intended Learning Outcomes		BBA (Hons) in Accountancy (02402-BAC)	BBA (Hons) in Accounting & Finance (02402-BAF)	BBA (Hons) in Financial Services (02402-BFS)	BBA (Hons) in Global Supply Chain Management (02402-GSC)	BBA (Hons) in International Shipping and Transport Logistics (02402-IST)	BBA (Hons) in Management (02402-MGT)	BBA (Hons) in Marketing (02402-MKT)
9.	Evaluate the processes and structures through which organizations plan, decide, motivate and control their activities;	Introduced	MM1051 Tango! Managing Self & Leading Others MM2021 Management & Organisation APSS111 Introduction to Psychology APSS112 Introduction to Sociology						
		Reinforced & assessed	MM4311 Strategic Management						
			-	LGT3016* LGT3106* LGT3207*	LGT3016* LGT3108* LGT3106* LGT3206* LGT4011* LGT4016*	MM3111; MM3131* MM3141; MM3151 MM4111*; MM4121* MM4132*; M4141* MM4151*; MM4161* MM4181*; MM4191* MM4342; MM4351 MM4391*	MM3711 MM3761 MM3771* MM4711 MM4391* MM4781*		
Others	<ul style="list-style-type: none"> - Leadership & Competence for Success Programme - Work-Integrated Education (WIE) - Student and Professional mentorship 								
10.	Identify and analyze those aspects of the domestic and global business environment that set the 'parameters of choice' within which business organizations set objectives and take actions.	Introduced	AF1605 Introduction to Economics MM2711 Introduction to Marketing						
		Reinforced & assessed	MM4311 Strategic Management LGT2106 Principles of Operations Management						
			AF4230*	AF4322* AF4323* AF4326*	AF3322* AF4322 AF4334*	LGT3001 LGT4105 LGT3012* LGT4104*	LGT3001* LGT3012* LGT4004* LGT4012* LGT4208	MM2392*; MM4132* MM4181* MM4351	MM2392*; MM3711 MM3721; MM3761 MM3771*; MM3782* MM3791*; MM4711 MM4721*; MM4732 MM4741*; MM4751 MM4772; MM4791* MM4831*

No.	Programme Intended Learning Outcomes	BBA (Hons) in Accountancy (02402-BAC)	BBA (Hons) in Accounting & Finance (02402-BAF)	BBA (Hons) in Financial Services (02402-BFS)	BBA (Hons) in Global Supply Chain Management (02402-GSC)	BBA (Hons) in International Shipping and Transport Logistics (02402-IST)	BBA (Hons) in Management (02402-MGT)	BBA (Hons) in Marketing (02402-MKT)	
11.	Have sufficient professionally-specific skills and knowledge to make an immediate contribution to the organization in which they are first employed AND have a foundation of professionally-specific skills and knowledge, on which to base the process of continuous professional development.	Introduced	AF2108 Financial Accounting AF2110 Management Accounting 1						
		Reinforced & assessed	AF3111 AF3211 AF3507 AF4106 AF4230* AF4912	AF3111 AF3211* AF3507 AF4106* AF4331 AF4912	AF4331* AF4912	LGT2009*; LGT3003* LGT3016*; LGT3023* LGT3107; LGT3108* LGT4017*; LGT4021* LGT4102*; LGT4103* LGT4114*; LGT4209	LGT2009; LGT3003* LGT3004*; LGT3007* LGT3015*; LGT3016* LGT3020*; LGT3022* LGT3023; LGT3024* LGT3108*; LGT4004* LGT4005; LGT4006* LGT4010*; LGT4013* LGT4017; LGT4021* LGT4208	MM2392* MM3151 MM3461* MM4111* MM4121* MM4501*	
		Others	- Met by the specialist elements in the curriculum for respective programmes, and by the learning, teaching and assessment processes, which emphasise the ability to function as a professional in respective area.						

* Elective Subject

List of Subjects

AF1605	Introduction to Economics	LGT2009	Introduction to Shipping & Transport Logistics Operations	MM1051	Tango! Managing Self & Leading Others	AMA1500	Foundation Mathematics for Accounting and Finance
AF2108	Financial Accounting	LGT2106	Principles of Operations Management	MM2021	Management & Organisation	AMA1501	Introduction to Statistics for Business
AF2110	Management Accounting 1	LGT3001	Logistics and Distribution Management	MM2392	Social Entrepreneurship Practicum	APSS111	Introduction to Psychology
AF2504	Introduction to Business Law	LGT3003	Intermodalism	MM2422	Managing Business Information Systems & Applications	APSS112	Introduction to Sociology
AF2602	Global Economic Environment	LGT3004	Navigation and Communication Systems	MM2711	Introduction to Marketing Research Methods for Management	LCR-CBS	Chinese – LCR language subject
AF3110	Intermediate Accounting 1	LGT3007	Air Transport Logistics	MM3011	Human Resource Management	CBS3221P	Chinese Language Communication for Business
AF3111	Intermediate Accounting 2	LGT3012	Research Methods	MM3111	Training and Development	LCR-ELC(1)	English – LCR language subject 1
AF3120	Management Accounting 2	LGT3015	Ship Construction and Maintenance	MM3131	Organizational Behaviour	LCR-ELC(2)	English – LCR language subject 2
AF3210	Hong Kong Tax Framework	LGT3016	Shipping Logistics	MM3141	Managerial Leadership	ELC3221	Workplace English for Business Students I
AF3211	Accounting Information Systems	LGT3019	Economics of International Transport Logistics	MM3151	Management Information Systems	ELC3222	Workplace English for Business Students II
AF3313	Business Finance	LGT3020	International Trade and Shipping	MM3411	Knowledge Management	FB1003	Freshman Seminar
AF3316	Investments	LGT3022	Marine Navigation and Meteorology	MM3451	Integrated Marketing Communications		
AF3317	Risk Management	LGT3023	Carriage of Goods Law	MM3711	Consumer Behaviour		
AF3318	Principles of Insurance	LGT3024	Cargo Operation and Management	MM3721	Marketing Research		
AF3322	Credit Analysis & Management	LGT3101	Intermediate Business Statistics	MM3761	Further Marketing Research		
AF3507	Company Law	LGT3102	Management Science	MM3771	Marketing Channel Management		
AF3508	Employment Law	LGT3106	Quality Management	MM3782	Retailing and Merchandising		
AF4106	Advanced Financial Accounting	LGT3107	Warehousing and Materials Management	MM3791	Internet Marketing		
AF4224	Information Systems Audit and Control	LGT3108	Introduction to Enterprise Resource Planning System	MM3841	Employee Relations		
AF4228	Auditing and Assurance	LGT3206	International Study Tour in Shipping & Logistics	MM4111	Human Resource Management in China		
AF4229	Tax Planning and China Tax	LGT3207	Study Tour and Visits in Global Supply Chain Management	MM4121	Reward & Performance Management		
AF4230	Forensic Accounting and Advanced Auditing	LGT4004	Management of Maritime Organisations	MM4132	Managing Diversity in Organisations		
AF4317	Derivative Securities	LGT4005	Shipbroking and Chartering Management	MM4141	Gender and Organisations		
AF4318	Financial Systems in China	LGT4006	Advanced Navigation and Ship Handling	MM4151	Staffing and Selection		
AF4320	Corporate Finance	LGT4010	Stability, Stress and Loadlines	MM4161	International Human Resource Management		
AF4322	Management of Financial Institutions	LGT4011	Port Planning and Management	MM4181	Business Negotiation		
AF4323	International Finance	LGT4012	Airport Management	MM4191	Strategic Management		
AF4324	Financial Planning	LGT4013	Liner Shipping Management	MM4311	Global Business Management		
AF4325	Wealth Management	LGT4015	Legal Aspects of e-Business in Logistics	MM4342	Entrepreneurship		
AF4326	Fixed Income Securities	LGT4016	Maritime Law	MM4351	Management Practice Through Real World Projects		
AF4328	Mergers and Acquisitions	LGT4017	Information Systems for Logistics Management	MM4391	E-Commerce for Management		
AF4331	Business Valuation	LGT4020	Insurance in Shipping and Transport Logistics	MM4411	Environmental Management for Business		
AF4512	Corporate Governance and Compliance	LGT4021	Shipping Finance	MM4411	Corporate Social Responsibility		
AF4513	Corporate Social Responsibility	LGT4101	Practice of Management Decision Analysis	MM4513	China Business Management		
AF4912	Capstone Project	LGT4102	Simulation for Operations & Information Management	MM4522	Business to Business Marketing		
		LGT4103	Project Management	MM4711	Marketing Management in China		
		LGT4104	Operations Strategy	MM4721	Global Marketing		
		LGT4105	International Operations Management	MM4732	Market Decision Analysis		
		LGT4106	Supply Chain Management	MM4741	Marketing Strategy		
		LGT4110	Purchasing Management	MM4751	Product Management		
		LGT4111	Special Topics in Operations Management	MM4772	Sales Management		
		LGT4113	Service Operations Management	MM4781	Services Marketing		
		LGT4114	Supplier Development and Contact Management	MM4791	Strategic Brand Management		
		LGT4208	ISTL Capstone Project	MM4831	Applied Statistical Analysis for Management		
		LGT4209	GSCM Capstone Project	MM3461	Management Capstone Project		
				MM4922	Marketing Capstone Project		
				MM4942			

**Honour Declaration
(for individual assignment)**

I declare that the work in this assignment is completely my own work. No part of this assignment is taken from other people's work without giving them credit. All references have been clearly cited.

I understand that an infringement of this declaration leaves me subject to disciplinary action by The Hong Kong Polytechnic University.

Student Name Signature Student ID Date

Department Programme

Subject Title & Code (for the assignment concerned)

Note:
Suitable for copying
Pro forma to be signed and attached to assignments
or
Copied, by students, onto their assignments

Honour Declaration (for group assignment)

We declare that the work in this assignment is completely our own work. No part of this assignment is taken from other people's work without giving them credit. All references have been clearly cited.

We understand that an infringement of this declaration leaves us subject to disciplinary action by The Hong Kong Polytechnic University.

_____	_____	_____	_____
Student Name	Signature	Student ID	Date

_____	_____	_____	_____
Student Name	Signature	Student ID	Date

_____	_____	_____	_____
Student Name	Signature	Student ID	Date

_____	_____	_____	_____
Student Name	Signature	Student ID	Date

_____	_____	_____	_____
Student Name	Signature	Student ID	Date

_____	_____	_____	_____
Student Name	Signature	Student ID	Date

_____	_____		
Department	Programme		

Subject Title & Code (for the assignment concerned)

Note:
*Suitable for copying
 Pro forma to be signed and attached to assignments or
 Copied, by students, onto their assignments*

